

Wireless Music Phone



Safety precautions

For your safety and to keep your phone in good operating condition, read the following tips and reminders carefully before using your phone.



Always keep the phone dry and free from dust.



Make sure that the phone is switched off before removing/replacing the battery.



Refer phone servicing only to qualified personnel.



Use only approved accessories. Do not connect incompatible products or devices.



Use the phone following the instructions in this user guide.



IMPORTANT: Refer to the **Appendix** for detailed safety notices.

Table of contents

Safety precautions	ii
About this guide	vi
Conventions used in this guide	vii
Welcome	viii
Package contents	ix
System requirements	xi
Specifications	xi

Chapter 1: Basic information

1.1	Phone layout.....	1-2
1.2	Battery information	1-4
1.2.1	Battery power levels.....	1-4
1.2.2	Removing and installing the battery.....	1-4
1.2.3	Charging the battery	1-6
1.2.4	Turning the phone on or off.....	1-8
1.2.5	Locking the keypad	1-8
1.2.6	Unlocking the keypad.....	1-9
1.2.7	Display layout.....	1-10

Chapter 2: Installing and using the AiGuru S1 Utility

2.1	Installing the AiGuru S1 Utility.....	2-2
2.2	Configuring the AiGuru S1 Utility settings	2-12
2.2.1	Phone Configuration	2-13
2.2.2	Displaying phone status.....	2-14
2.2.3	Answer Machine Settings	2-15
2.2.4	Voice Mail.....	2-16
2.2.5	Wi-Fi Music	2-17

Table of contents

Chapter 3: Setting up and getting to know the phone menu

3.1	WiFi Music.....	3-2
3.2	Phone Settings	3-4
3.3	Keypad lock	3-8
3.4	WiFi Status.....	3-8
3.5	MAC Address	3-9

Chapter 4: Using the Skype™ features

4.1	Making a call	4-2
	4.1.1 Using an entry in the phone book:	4-2
	4.1.2 Using the numeric keypad:	4-3
	4.1.3 Terminating a call:	4-3
4.2	Options during a call.....	4-4
	4.2.1 Hold.....	4-4
	4.2.2 Loud Speaker.....	4-6
	4.2.3 Mute	4-7
4.3	Retrieving recorded Messages	4-8
4.4	Viewing/clearing the call history.....	4-9
4.5	Hosting a Skype™ conference call.....	4-11
4.6	Using the Answer Machine.....	4-12

Appendix:.....

Reference information

A.1	Setting PC-cillin™	A-2
A.2	Creating a playlist.....	A-6
A.3	Notices.....	A-9

Table of contents

A.4	Safety statements.....	A-10
A.5	Troubleshooting	A-19
A.6	FAQ	A-20

About this guide

This user guide contains the information you need to use your WP0001 phone.

How this guide is organized

This user guide contains the following parts:

Chapter 1: Basic information

This chapter describes the phone layout, provides information about the battery including how to charge it, and basic functions such as locking/unlocking the keypad and turning the phone on/off. This chapter also describes the different layout displays of the phone.

Chapter 2: Installing and using the WP0001 Utility

This chapter provides instructions on how to install the WP0001 utility and the required device drivers. This chapter also shows you how to configure the phone and Wireless Link USB dongle.

Chapter 3: Setting up and getting to know the phone menu

This chapter gives you an overview of a desktop and notebook setup, and helps you navigate through the Phone Menu and change phone settings.

Chapter 4: Using the Skype™ features

This chapter shows you how to use the phone and navigate through the Skype™ menu

Appendix: Reference information

This chapter describes PC-cillin firewall settings and Windows Media Player playlist creating, and provides safety notices, an **FAQ** section.

Conventions used in this guide

To make sure that you perform certain tasks properly, take note of the following conventions used throughout this user guide.



NOTE: Tips and information to aid in completing a task.



IMPORTANT: Instructions that you **MUST** follow to complete a task.



CAUTION: Information to prevent injury to yourself when trying to complete a task.



WARNING: Information to prevent injury to the unit when trying to complete a task.



NETWORK DEPENDENT/SUBSCRIBED FEATURE: The phone feature is network dependent or subscribed.

Welcome

Thank you for choosing the **VANACCESS WP0001 Wireless Music Phone Kit**. It will allow you to make phone using your broadband connection. This Phone is specially designed to facilitate the manipulation of the service and features provided by Skype™.

What is Skype™

Skype™ is free and simple software that enables you to make free calls anywhere in the world in minutes. If you are tired of paying outrageous fees for telephony, Skype™ is for you!

Skype™ is quick and easy to install. Just download it, register, and within minutes you can use the **VANACCESS WP0001 Wireless Music Phone** to call your friends on Skype™. Skype™ calls have excellent sound quality and are highly secure with end-to-end encryption. Best of all, Skype™ does not require you to reconfigure your firewall or router - it just works! Skype™ is a registered trademark of Skype Technologies S.A. and all rights related to it are reserved. To create an account, download the Skype™ program, and know more about this program, visit www.skype.com.



Subscribed feature. Skype™ is a registered trademark of Skype™ Technologies S.A. To create an account, download the Skype™ program, and know more about this program, visit www.skype.com.

“Get WP0001 Phone convenience when you use Skype™! Now you do not have to sit in front of your computer when you want to talk to your friends. With the Skype application running on your PC, the handset can read and display your contact list on its built-in illuminated display. Just choose who you want to talk to from the menu, press a button, and get ready to talk.

Of course, the handset supports SkypeOut™ dialing as well as your Skype contact list. The handset rings when you have a Skype™ or SkypeIn™ call coming in, and shows the caller's ID on the screen. You can hit the Mute button for privacy, or use the loud- speaker function to let everyone join in. You can put an existing call on hold and allow callers to leave a message on the answer machine, and retrieve voice mail with ease.

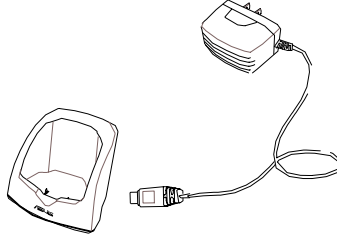
In short, the **VANACCESS WP0001 Wireless Music Phone Kit** gives you all the functionality of a regular phone, through Skype™. You get the convenience of a wireless phone and all its features, plus the high-quality voice reception that you get from Skype™ on your PC, without being tied to your computer

Package contents

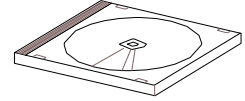
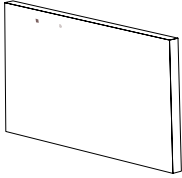
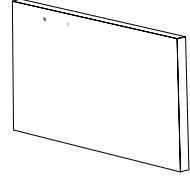
Check your phone package for the following items:



WP0001 phone
User guide

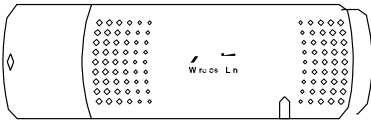


USB cradle and power cord



Quick Start Guide
Support CD

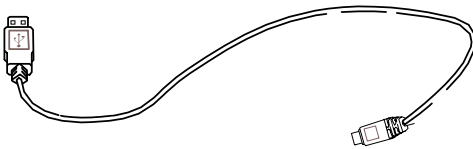
Battery



Wireless Link USB dongle
extension



Wireless Link USB dongle



USB cable

System requirements

- PC running Microsoft® Windows® XP (SP2) / 2000 (SP4)
- At least 1 GHz processor
- At least 256 MB RAM
- At least 40 MB free hard disk drive space
- Internet connection: Dial-up, broadband, or cable modem (at least 33.6 Kbps)



Note. We recommend a broadband connection. Voice quality may vary depending on the connection speed.)

- Skype™ version 2.0.1.81 recommended (bundled in the support CD)

Specifications

Dimension	117(L) x 46(W) x 23(H) mm
Weight	100 g
Wireless standard	IEEE 802.11 b+g @11/54 Mbps, 2.4 GHz, with auto-fallback and auto-channel selection
I/O	128 x 64 Dot matrix STN LCD 0.5 W Speaker Receiver Mini USB port* 3.5 mm 2-channel Earphone jack
Keypad	Number keys (0-9, *, #) End/Exit key Call key Up/down keys Right soft key Left soft key <i>(Continued on the next page)</i>

Specifications

Features	Skype™, SkypeIn™, SkypeOut™, Skype™ Conference support Phonebook search, call history Call rejecting, call receiving, call redial, hold Hands-free speaker out Answer machine Caller ID display
Operating distance	Indoors: 30 m** Outdoors: 100 m**
Power duration	Li-ion 3.7 V 750 mA, 25 hours standby, 2.5 talk hours
Charging	3 hours USB full charging
Wireless receiver	Wireless Link dongle (UI) mounted on the PC or notebook
Software to install	WP0001 Utility Wireless Link dongle driver
Accessories	Support CD User Manual Quick Start Guide Cradle Adapter Battery USB cable Wireless Link dongle Wireless Link dongle 3D 180° USB extension

Notes: USB connection is only for charging and configuring your phone.

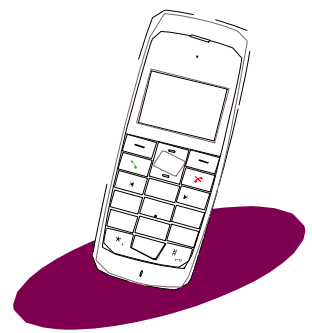


** According to free space test. The operating distance may be shorter or interfered if there are walls, barriers, or interferences in the home layout or operating environment.

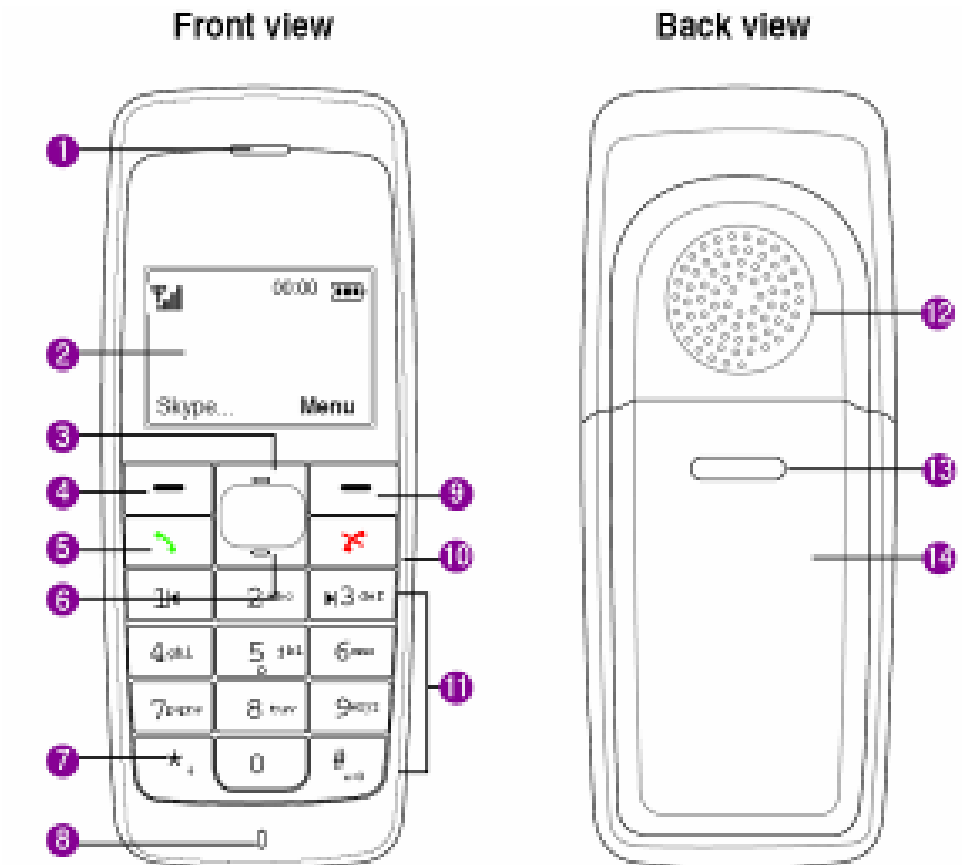
Chapter 1

Basic information


This chapter describes the phone layout, provides information about the battery including how to charge it, and basic functions such as locking/locking the keypad and turning the phone on/off. This chapter also describes the different layout displays of the phone.



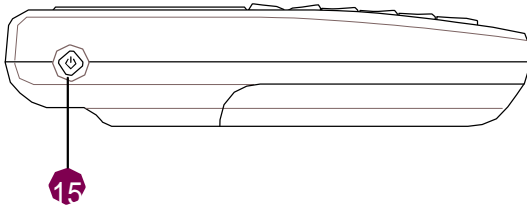
1.1 Phone layout



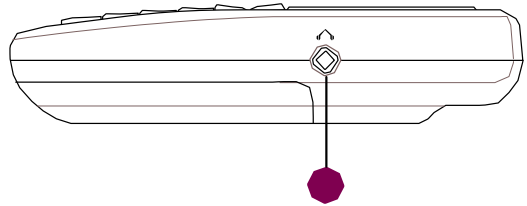
1. **Earpiece**
 2. **LCD screen.** Displays information such as time, battery status, signal strength, and menus.
 3. **Up key.** Scrolls up menu lists.
 4. **Left soft key.** Allows you to perform the function indicated on the screen.
 5. **Call key.** Initiates a call.
 6. **Down key.** Scrolls down menu lists.
-

7. **Double press the key**  **to display the icon +.**
8. **Microphone**
9. **Right soft key.** Allows you to perform the function indicated on the screen.
10. **End key.** Terminates a call.
11. **Alphanumeric keypad.** Allows you to enter numbers, letters, and symbols.
12. **Speaker**
13. **Battery latch.** Secures the battery cover to the phone.
14. **Battery cover.** Covers the battery.

**Side view (left)
(right)**

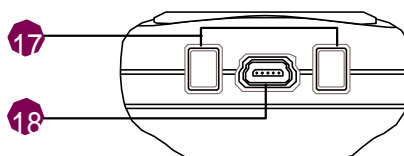


Side view



15. **Power button.** Turns the phone on or off.
16. **Earphone port.** Connects an earphone.

Bottom view



17. **Charging pad.** Connects the phone to the cradle to charge the phone battery.
18. **USB B type connector.** Connects a USB B series plug to charge the phone battery and configure the phone.

1.2 Battery information

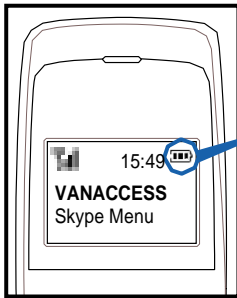
A rechargeable battery powers the WP0001 Wireless Music Phone. Make sure that the battery is fully charged to prevent interrupted communications due to power loss.



Important. On first use, charge the battery to its full capacity to ensure longer battery life.

1.2.1 Battery power levels

The battery icon on the LCD screen helps you keep track of the remaining battery power so you will know when you need to charge the battery. Note the battery icon indicating the batter power levels.



Icon	Indication
	Battery is 55% to 100% full.
	Battery is 25% to 55% full.
	Battery is 10% to 25% full.
	Battery has no power. Charging is required.

1.2.2 Removing and installing the battery

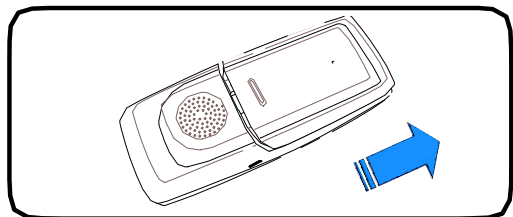
The rechargeable battery comes installed with the WP0001. In the future, you may need to replace the current battery. Follow the instructions in this section to remove and install the battery.



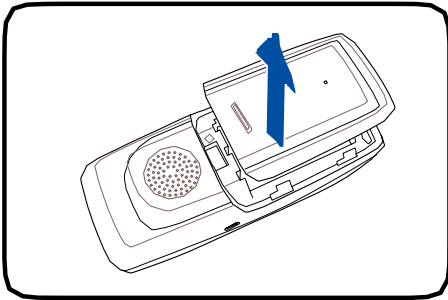
Warning. Before removing or installing the battery, make sure the phone is not connected to a power source.

To remove the battery:

1. Push the battery latch in the direction of the arrow until the battery cover disengages from the phone.

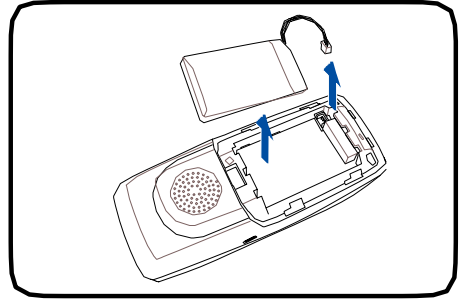


2. Lift the cover then set it aside.



3. Unplug the battery cable from the connector on the phone.

4. Lift the battery and set it aside.

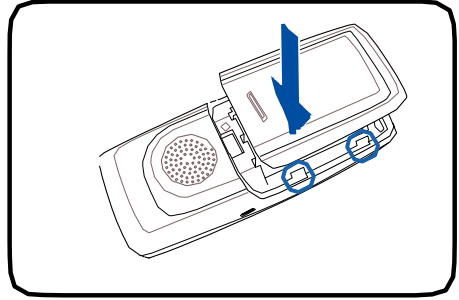
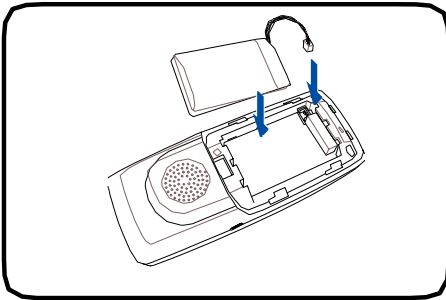


To install the battery:

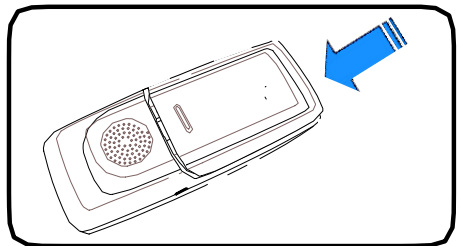
1. Plug the battery cable to the connector on the phone.

2. Position the battery over the phone, then install it into the slot.

3. Position the battery cover as shown, matching the tabs on the cover with the grooves on the phone.





Slide the battery cover in the direction of the arrow until the latch snaps in place.



1.2.3 Charging the battery

Low battery indicator

The battery indicator  on the upper left corner of the screen indicates how much charge remains in the battery. When the battery indicator shows , you need to charge the battery to continue using it. You may charge the battery either through the USB cable or the cradle.

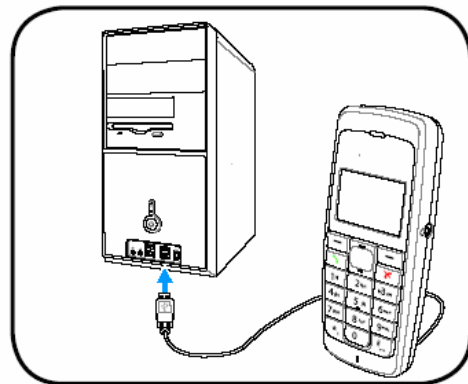
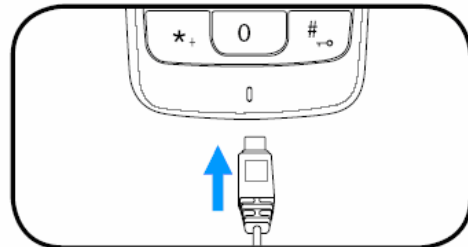


Note. To know the charging status of the phone, note the LED color of the Up/Down key. Refer to the table below.

Color	Indication
Orange	Battery is charging in idle mode (backlight is off)
Purple	Battery is charging while being used (backlight is on).
No color (LED off)	Charging is complete

USB direct charging

1. Connect the USB Series B plug (with the squarish end) to the port at the bottom of the phone.
2. Connect the USB Series A plug (with the flat rectangular end) to a USB 2.0 port on your computer.



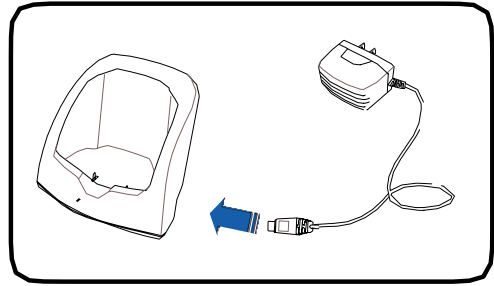
Important

Make sure your computer is turned on.

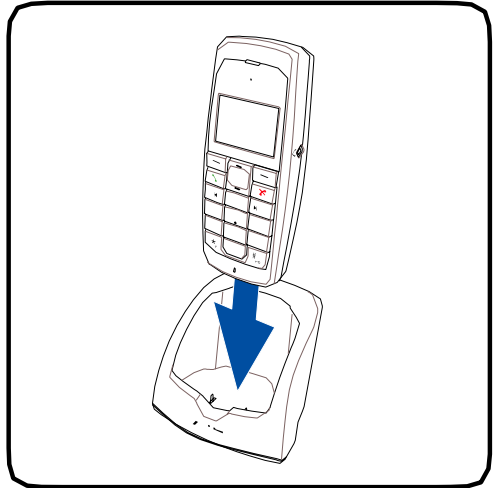
For best battery performance, allow the battery to charge and discharge completely the first few times you use it.

USB cradle charging

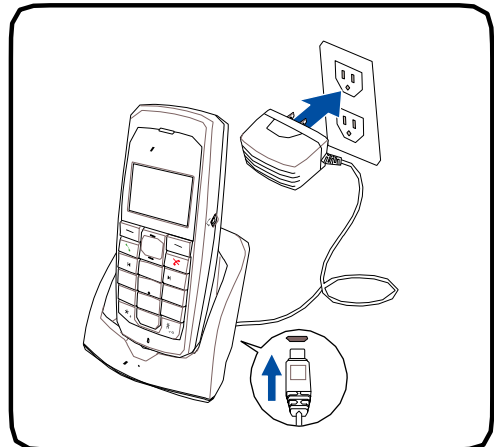
1. Connect the USB Series B plug (with the squarish end) of the power cable to the port at the back of the USB cradle.



2. Slide the phone into the cradle until it fits.



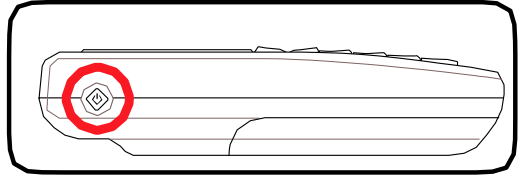
3. Connect the power plug to a power source.



1.2.4 Turning the phone on or off

To turn the phone on or off:


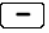
1. Locate the power button on the left side of the phone.
2. Press the power button for a few seconds until the display turns on or off.

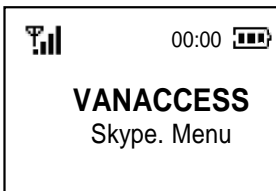


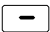
1.2.5 Locking the keypad

There are two ways to lock the keypad.

To lock the keypad using the on-screen **Menu**:

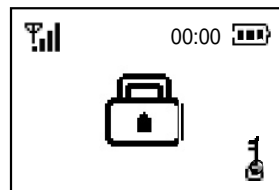
1. Press the right function key  to display the Menu .
2. Scroll down to the **Keypad Lock** item, then press the left soft key  to **Enter** and confirm.




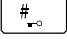
3. The padlock lock icon appears to confirm whether you want the keypad or not. Press the left soft key  for **Yes**.
4. The key lock icon appears in the middle of the screen to indicate that the keypad has been locked. The unlock symbol is at the bottom right corner.



No





To lock the keypad using **phone keys**:

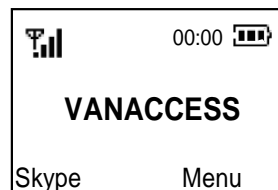
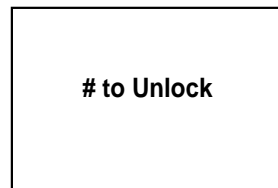
1. Press the right soft key  .
2. Press  .
3. The key lock icon appears at the bottom right corner of the screen to indicate that the keypad has been locked.



1.2.6 Unlocking the keypad

To lock the keypad using **phone keys**:

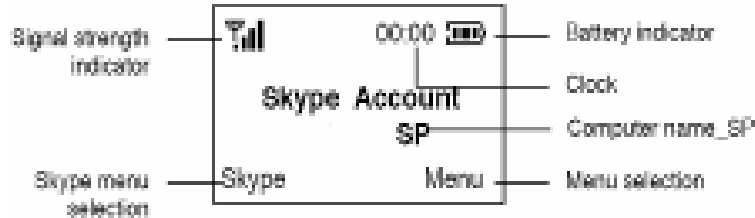
1. Press the right soft key  .
2. Press the  key to unlock the keypad.
3. The main screen then appears, indicating that the keypad is ready to use.

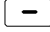


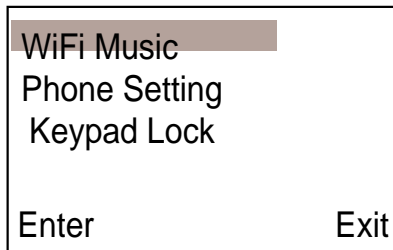
1.2.7 Display layout

Idle mode


The phone is in idle mode when it is ready for use and you have not performed any action.

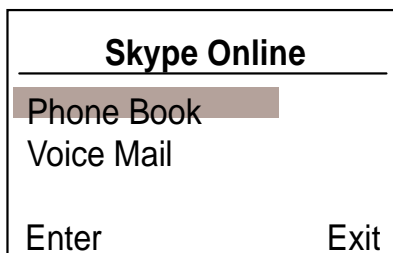


When you press the right soft key , the main menu appears. You can go to this mode to listen to WiFi music, configure phone settings, and lock the keypad.



Skype™ mode

When you press the left function key , the Skype menu appears. You can go to this mode to open the Skype phone book, listen to recorded voices, retrieve recorded messages, view the call history, initiate a conference call, or configure answering machine settings.



Chapter 2

Installing & using the WP0001 Utility

This chapter provides instructions on how to install the WP0001 Utility and the required device drivers. This chapter also shows you how to configure the phone and Wireless Link USB dongle.



2.1 Installing the WP0001 Utility

Before using your WP0001 Wireless Music Phone, you need to install the WP0001 Utility. This utility allows you to take full advantage of your phone's features and settings.

Requirements for installing the WP0001 utility:

1. Windows® XP (SP2) / 2000 (SP4) operating system
2. At least 1 GHz processor
3. At least 256 MB RAM
4. At least 40 MB free hard disk drive space
5. Internet connection: Dial-up, broadband, or cable modem (at least 33.6 Kbps)
6. Skype™ account
7. Microsoft® DirectX 9.0c
8. WP0001 support CD



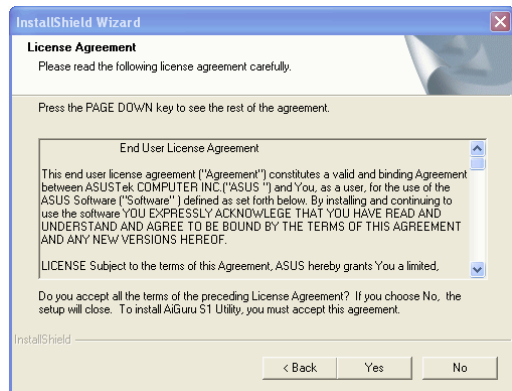
Subscribed feature. Consult the Internet Service Provider(ISP) for detailed information about network setting.

To install the WP0001 Utility:

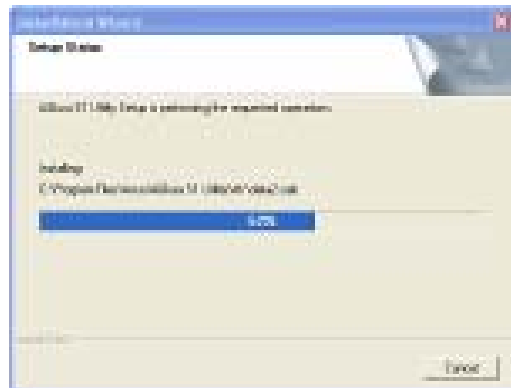
1. Place the WP0001 support CD in the optical drive.
The WP0001 Control Panel appears.
Click **Install WP0001 Utility**.



2. Click **Yes** to start installation when the InstallShield Wizard appears.



3. Installation begins. The **Setup Status** window appears, indicating the progress of installation.



4. This picture appears when installation is completed. Refer to the description on next page to connect the Wireless Link USB dongle to your PC.

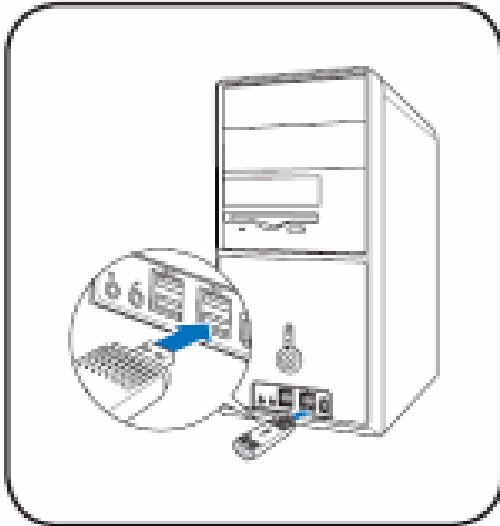


Installation can not proceed if the Wireless Link USB dongle is not connected to your PC.

To connect the Wireless Link USB dongle:

You may plug the Wireless Link USB dongle to your PC directly or connect it to your PC with the Wireless Link USB dongle extension. See the pictures below:

Method 1:



Method 2:



The Wireless Link USB dongle extension came with the phone. You can adjust it up to 360° to get better signal.



The Wireless Link USB dongle is a thumb-sized device that creates a wireless network using the IEEE 802.11g wireless standards. The device allows wireless communication between your computer and your phone using USB 2.0 connectivity, giving you the convenient access to the Skype™ program and control of the WP0001 Utility.

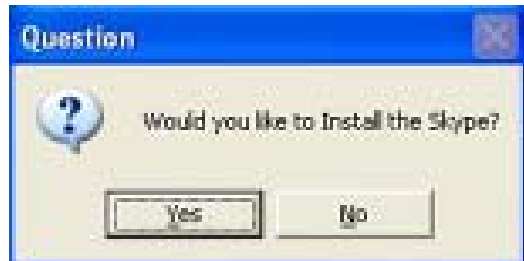
Now searching for Hardware and installing Drivers

100%

Installation proceeds when you connect the Wireless Link USB dongle to your PC.

To install Skype™:

1. A dialogue box opens, asking if you would like to install the Skype™ program. Click **Yes** to install the program.



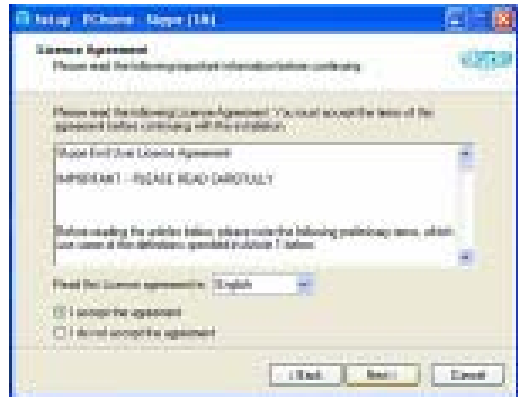
We recommend you install the program in the Support CD or the Programs suggested in VANACCESS website.

2. The Skype™ Setup Wizard appears. Select the language to use during the installation, and then click **Next** to install the program; otherwise, click **Cancel**.



3. Read the License Agreement, then click the button **I accept the agreement**.

Click **Next**.



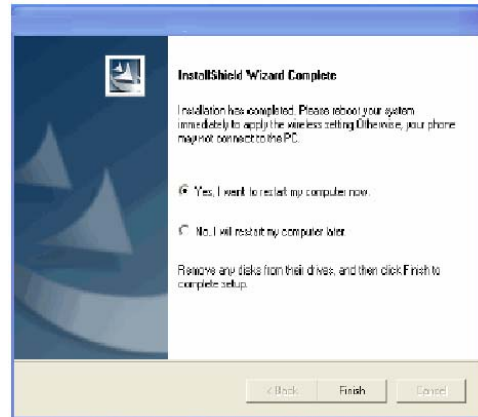
4. When Skype™ installation is done, you may choose to launch the program. Check the box **Launch Skype** if you want to do this.

Click **Finish** to install the other components of the WP0001 Utility.

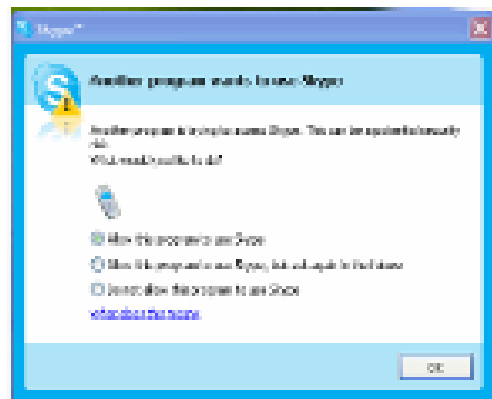


To continue WP0001 Utility installation

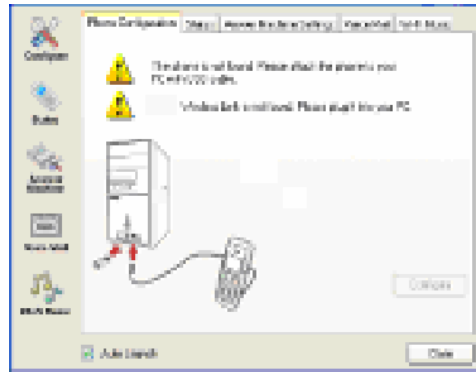
1. **Install Shield Wizard** appears after you finish Skype installation. Select **Yes, I want to restart my computer now** and click **Finish**.



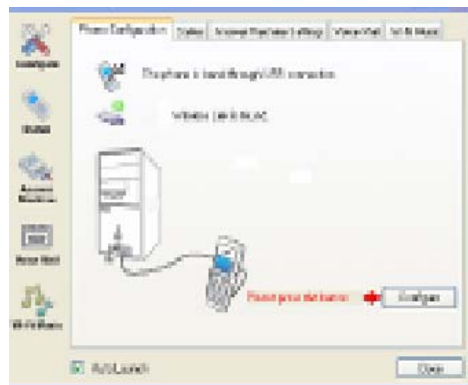
2. After restarting the computer and launching Skype, the picture on the right appears. Select **Allow this program to use Skype** and click **OK**.



3. The warning message appears, if the phone and the Wireless Link USB dongle are not connected to your PC.



4. The following message appears, reminding you to press the button Configure to set up the phone.



5. Do not remove the USB connection during phone configuration.

The phone is rebooting to apply the settings. Please do not detach the USB connecting from the phone until this warning box is closed.

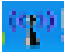
6. Click **OK** when phone setup is done.



7. The phone displays the information as the right picture.



Important. "TDD-W3V" in the phone display is the computer name.

8. To change the computer name displayed in you phone, double click the  icon in following the task list.



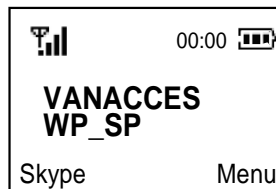
9. Input the computer name you desired, when the following screen appears:



10. On **WP0001 Utility** screen, click **Phone Configuration** tab, and click **Configure**.



11. When configuration is done, the new computer name appears on the screen of your phone.




You may specify a computer name or just keep the original computer name.

2.2 Configuring the WP0001 Utility settings

After installing the WP0001 Utility and Wireless Link USB dongle device driver, it is time to configure the settings to optimize the features of your phone.

To launch the WP0001 Utility:

1. Turn on your phone.
2. Connect the phone to your computer using the USB cable that came with the package.
3. Connect the Wireless Link USB dongle to your computer.
4. Start your computer.
5. Launch the Skype application and sign in to your account.
6. Launch the WP0001 Utility by double-clicking the WP0001 Utility icon (with the image of this phone ) on your desktop or the taskbar.
7. The WP0001 Utility main screen appears. Refer to the following section for details on how to configure the phone with the Utility.




Utility


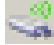



2.2.1


Phone configuration

1. Click the Phone Configuration tab or  icon to display the phone Configuration status.

2. wp Utility will detect the phone configuration status, as shown in the picture on the right:

 and  icons indicate that the phone configuration is


successful.  icon indicates the phone or the Wireless Link USB dongle is not connected to your computer, or the phone is

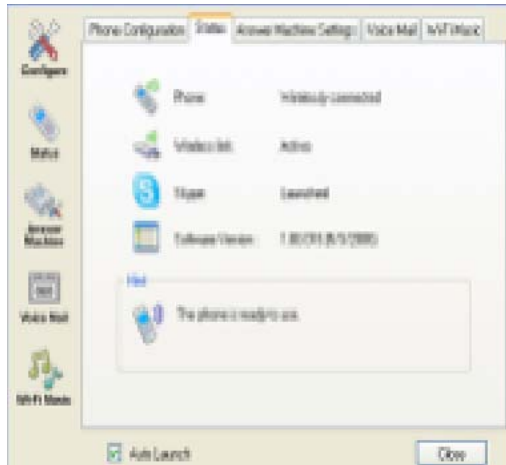
not on. If  icon appears, check the connection again and make sure to turn the phone on.



Important. You need to press Configuration button to reset the phone if you connect the phone to another computer or the IP address of your computer changes. The system will automatically detect your phone setting if you restart your computer or replug the Wireless Link USB dongle.

2.2.2 Displaying phone status

Click the **Status** tab or  icon to display the following information:




Item	Message	Indication
Phone	Wirelessly connected	The phone is communicating with the computer and you can make Skype call.
	Not wirelessly connected	The phone is not communicating with the computer and you can not make Skype call.
Wireless Link	Active	The Wireless Link USB dongle is successfully connected to the computer.
	Inactive	The Wireless Link USB dongle is not connected to the computer or not properly connected.
Skype	Launched	You are signed into your Skype™ account and connected to the WP0001 Utility.
	Not launched	You are not signed into your Skype™ account and/or you are connected to the WP0001 Utility.
WPUtility Software Version	The software version of the WP Utility you are using.	

Hint: Tells you the status of phone setting.

2.2.3 Answer Machine Settings

You can set the WP0001 Utility to give a pre-recorded message to a caller in case you are unable to answer the call.

To use the answering machine function:

1. Click the **Answer Machine Settings** tab or the  icon.
2. Turn on the **Answer Machine** function from your WP0001 phone. See section “4.6 Using the Answer Machine” for details.
3. Set the time period within which the function is activated if you do not receive the call.
4. Choose whether to use the stored **Default Greeting Message**, or record your **Customized Message**. See section “4.6 Using the Answer Machine” for details.




Notes

The Default Greeting Message is saved in C:\Program Files\WP0001 Utility\Greeting\greeting.

The Customized Message is saved in C:\Program Files\WP0001 Utility\VoiceMessages.

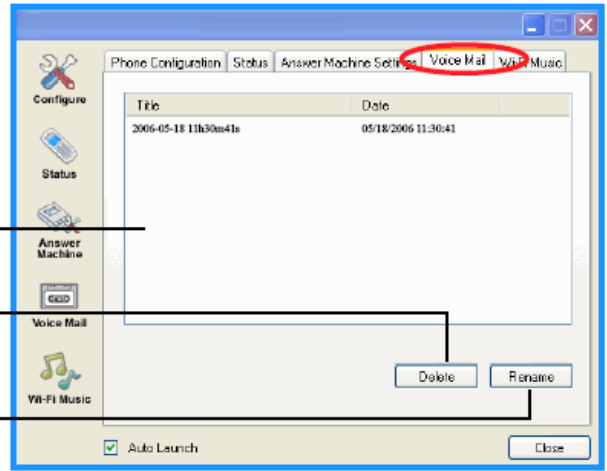
2.2.4 Voice Mail

Click the **Voice Mail** tab or the  icon to retrieve messages left on your answering machine.

Saved message(s) appear here


Click to delete

Click to rename and save the message



Note. By default, voice mails are saved in C:\Program Files\WP0001 Utility\Voice Message.

2.2.5 Wi-Fi Music

Click the **Wi-Fi Music** tab or the  icon to select the playlist you would like to listen to on your phone.

Click **Browse** to find your desired playlist, and click **apply**.



Important.

This device supports Windows Media Player 9 or later version.

Refer to the Appendix A.2 for details about creating a playlist.

Chapter 3

Setting up and getting to know the phone menu


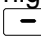
This chapter gives you an overview of a desktop and notebook setup, and helps you navigate through the Phone Menu and change phone settings.

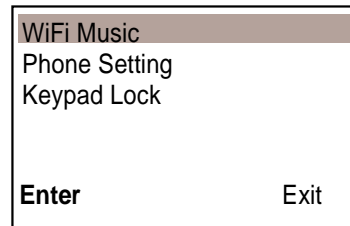
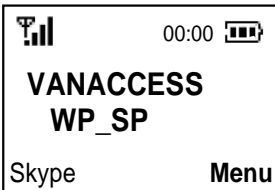


3.1 WiFi Music


Your WP0001 phone can function as a Windows Media Player remote controller, allowing you to play audio files while you are away from your computer, within the operating range of the WLAN module

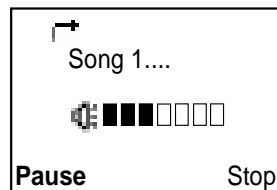
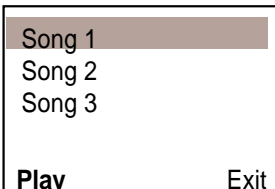
To enable WiFi Music:

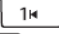
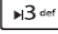
1. From the idle screen, press the right soft key  to display the Menu.
2. When the next screen opens, the item **WiFi Music** is automatically highlighted. Press the left soft key  to **Enter**.



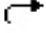



Important. Make sure you have specified the folder from which the music files will be played. See section “2.2.5 WiFi Music” for details.”


3. Scroll up or down to select the music file that you want to play, then press the left soft key  to **PLAY**
4. While the music is playing, scroll up or down to increase or decrease the volume.



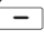



5. To play the previous song in the list, press . To play the next, press .

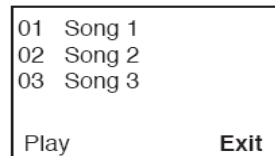
6. For playing mode, refer to the icon indications below.

-  - Play all in order once
-  - Randomly play all once
-  - Randomly play all in loop
-  - Play all in loop

To change the playing mode, press the **C** key .

7. To pause, press the left soft key . Press the left soft key  again to resume playing. To stop, press the right soft key .

8. To exit Windows® Media Player, press the right soft key .




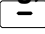
Note. Windows Media Player installed in your computer opens automatically when you start playing WiFi Music, and it closes when you choose to exit.

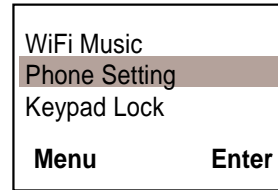
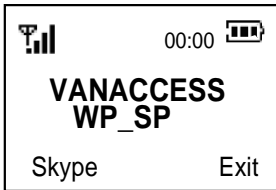
3.2 Phone settings



Refer to this section to change your phone settings. The Phone Settings menu allows you to change the default language, ringing volume, and display settings. You may also return to the default (factory) settings from this menu.

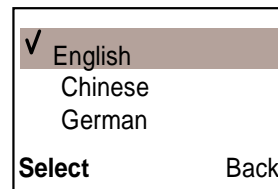
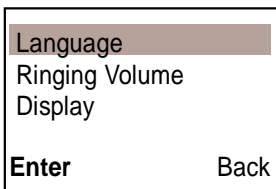
Changing the default language

To change the default language:

1. From the idle screen, press the right soft key  to display the Menu.
2. Scroll down to **Phone Setting**, then press the left soft key  to **Enter** and confirm.





3. When the next screen opens, the item **Language** is automatically highlighted. Press the left soft key  to **Enter**.
4. Scroll down to choose your desired language. A ✓ mark appears before your choice. Press the left soft key  to **Select**.

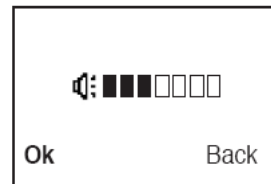
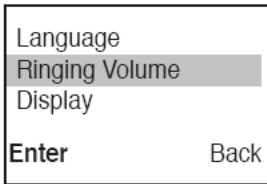


Note. The following language options are currently available: English, Chinese, German, and French.

Changing the ringing volume

To change the ringing volume:



1. From the idle screen, go to **Menu > Phone Setting**.
2. Scroll down to **Ringing Volume**, then press the left soft key  to **Enter**.
3. The following screen appears. Use the **Up/Down** key to increase/decrease the volume. Press left soft key  to choose **Ok** when done.

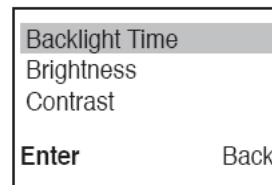
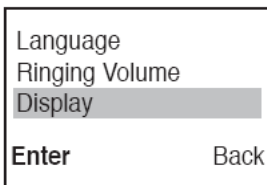



Changing the display settings

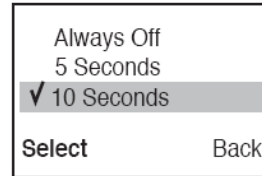
You may change the display settings to set the backlight time and to adjust the brightness and contrast of your display.

To set the **backlight time**:

1. From the idle screen, go to **Menu > Phone Setting**.
2. Scroll down to **Display**, then press the left soft key  to **Enter**.
3. When the next screen opens, the item **Backlight Time** is automatically highlighted. Press the left soft key  to **Enter**.



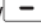


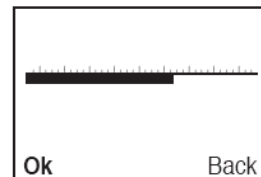
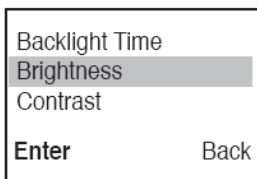
4. Scroll to your desired setting. Press the left soft key  to **Select**. A **√** mark appears before your choice. Refer to details on the table below.



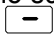
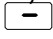
Backlight settings	
Item	Description
Always Off	Backlight is turned off all the time.
5 Seconds	Backlight turns off after 5 seconds
10 Seconds	Backlight turns off after 10 seconds
15 Seconds	Backlight turns off after 15 seconds
Always On	Backlight is turned on all the time

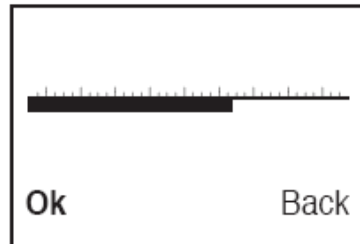
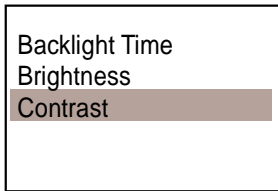
To set the **brightness level**:

- From the idle screen, go to **Menu > Phone Setting > Display**, then press the left soft key  to **Enter**.
- Scroll down to **Brightness**, then press the left soft key  to **Enter** and confirm.
- The following screen appears. Use the **Up/Down** key to increase/decrease the brightness level. Press the left soft key  to choose **Ok** when done.



To set the **contrast level**:



1. From the idle screen, go to **Menu > Phone Setting > Display**, then press the left soft key  to **Enter**.
2. Scroll down to **Contrast**, then press the left soft key  to **Enter**.
3. The following screen appears. Use the **Up/Down** key to increase/decrease the contrast level. Press the left soft key to choose **Ok** when done.

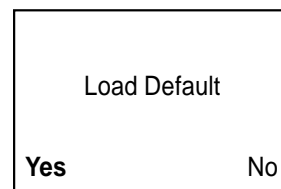
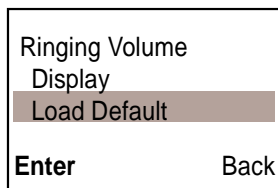


Loading the default settings

You may revert all phone settings to default, which means that you will load all original factory settings. You will lose all changes you have made if you load the default settings.

To load the default settings:

1. From the idle screen, go to **Menu > Phone Setting > Load Default**.
2. Press the left soft key  to choose **Enter**.
3. A confirmation message appears. Press the left soft key  to choose **Yes**.



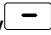
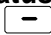
3.3 Keypad lock

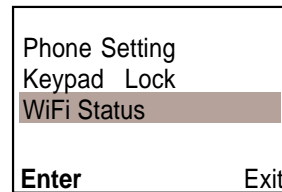
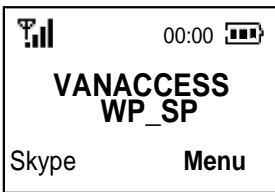
To lock the keypad, refer to sections “1.2.5 Locking the keypad” and “1.2.6 Unlocking the keypad.”

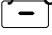
3.4 WiFi Status

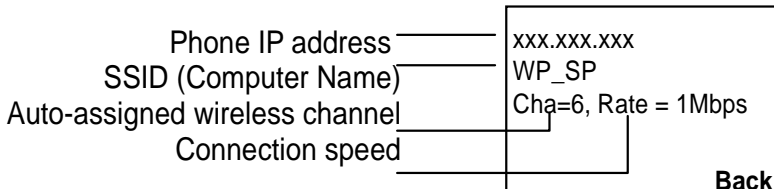
This item allows you to view the status of your WLAN connection.

To view WiFi Status:

1. From the idle screen, press the right soft key  to display the Menu
2. From the Phone menu, scroll to **WiFi Status**, then press the left soft key  to **Enter**.



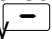
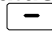
3. The following screen appears, displaying information on your WLAN connection. Press the right soft key  to go **Back** to the main screen.

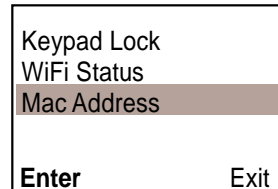
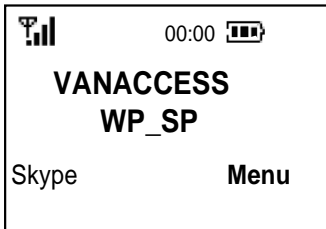



3.5 MAC Address

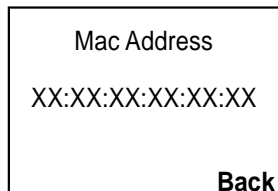
This item allows you to view the Media Access Control (MAC) address of your phone.

To view the MAC address:

1. From the idle screen, press the right soft key  to display the Menu
2. From the Phone menu, scroll to **WiFi Status**, then press the left soft key  to **Enter**.




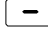
3. The following screen appears, displaying the MAC address information. Press the right soft key  to go **Back** to the main screen.

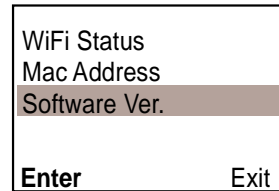
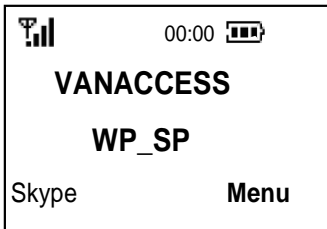


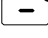
3.6 Software Version

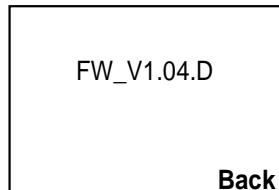
This item allows you to view the version of the software installed in your phone.

To view the firmware version:

1. From the idle screen, press the right soft key  to display the Menu
2. From the Phone menu, scroll to **Software Ver.**, then press the left soft key  to **Enter**.



3. The following screen appears, displaying the software version. Press the right soft key  to go **Back** to the main screen.



Chapter 4

Using the Skype™ features

This chapter shows you how to use the phone and navigate the Skype™ menu.



4.1 Making a call



Important. Before using your WP0001 Wireless Music Phone, make sure you have installed the WP0001 Utility and configured the required settings. Do not quit the utility while you are signed in to Skype™. Refer to Chapter 2 for details.

4.1.1 Using an entry in the phone book:

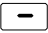



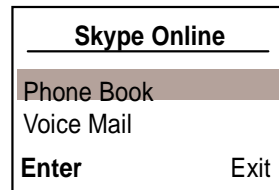
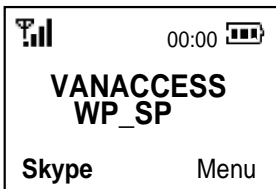
Subscribed feature. To make a call to a mobile phone or land line using SkypeOut™, you need to purchase credits. Visit the Skype™ website at www.skype.com for details.





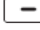
Note. The phone book on your phone only displays the contacts saved in your Skype account.

To make a call from a phone book entry:

1. From the idle screen, press the left soft key  to display the Skype menu.
2. When the next screen opens, the item **Phone Book** is automatically highlighted. Press the left soft key  to **Enter**.





Note. To directly access the phone book from the idle screen, simply press the up/down key .

3. Scroll up/down to choose the contact you want to call, then press  to make the call, or press the left soft key  to view contact's **Detail**.







Contact status table

When you open the phone book, an icon appears before each contact entry. Refer to the table below to know what the icon means.


Icon	Description
	The person is online/signed in to Skype™.
(no icon)	The person is offline/not signed in to Skype™.
	Indicates the contact's SkypeOut™ phone number.

4.1.2 Using the numeric keypad:

To make a call using the numeric keypad:

1. From the idle screen, dial the telephone number you want to contact.
2. Press the left soft key  to save the number; otherwise, press the right soft key  to delete the entry one by one.
3. Press  to delete all entries and return to the idle screen.
4. Press  to make the call.

4.1.3 Terminating a call:


When you are done with the phone conversation, press .

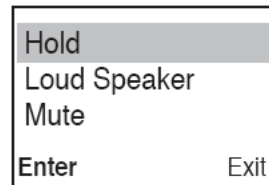
4.2 Options during a call


4.2.1 Hold

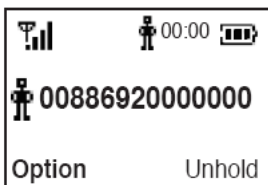
This feature allows you put a call in progress on hold to initiate or receive another call.

To use the call waiting function for outgoing calls:



1. Make a call. Refer to section “4.1.1 Using an entry in the phone book.”
2. While the call is in progress, choose **Option**.
3. Highlight **Hold**, then press the left soft key  to **Enter**.

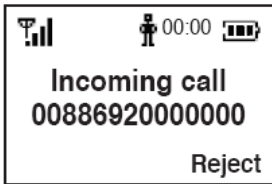



4. The following screen appears.
Note the  icon on the upper right portion of the screen and before the number, indicating that the current call is on hold.




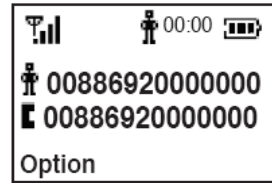
To activate the hold function for an incoming call while another call is in progress:

1. While a call is in progress, and you receive another call, you have the option to receive or reject the incoming call.
2. To receive the call, press  to listen to the incoming call.
3. The following screen appears. Note the  icon on the upper right portion of the screen, indicating that the first call is on hold.






The  icon before a number indicates it is on hold.

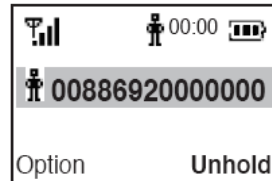
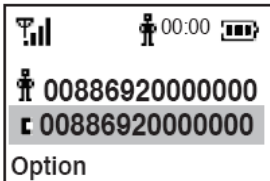
The  icon before a number indicates it is in progress.



Note. Receiving an incoming call while another call is in progress automatically puts the first call on hold. To return to the first call, you need to finish the received call first, then unhold the first call.

To terminate a call.



1. Press  to hang up and terminate the current call (.
2. To **Unhold** the first call, press the right softs key .

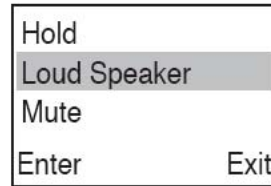



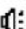
NOTE: You may not make a new outgoing call while another outgoing call is in progress.

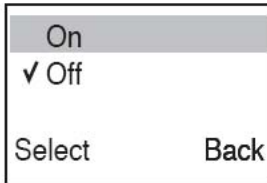
4.2.2 Loud speaker

This feature allows you to use the phone speaker for hands-free calling. For details on this feature, see section “4.1.1 Using an entry in the phone book”.

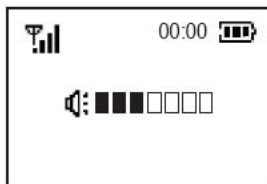
1. Make a call. Refer to “4.1.1 Using an entry in the phone book”
2. While the call is in progress, press the left soft key  to open **Options..**
3. Scroll down to **Loud Speaker**, then press  (left) to **Enter**.



4. Scroll up or down to **On** or **Off**, depending on your preference, then press left soft key  to **Select**. It goes back to the screen in the previous step. Press Exit.
5. The following screen appears. Note the  icon, indicating that the loud speaker is enabled.



6. Scroll up or down to increase or decrease the volume of the loud speaker.





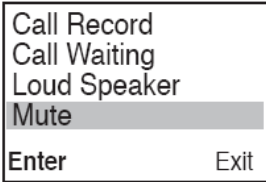
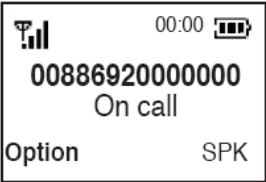
While the call is in progress (with the screen display in step 2), you may press the right soft key to enable the loud speaker.


4.2.3 Mute


This feature allows you to set the phone on mute mode, which turns off the microphone so the other party cannot hear you.

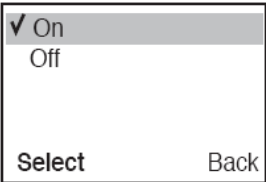
To enable or disable the mute function:


- 1. Make a call. Refer to section “4.1.1 Using an entry in the phone book.”
- 2. While the call is in progress, press the left soft key  to open **Option**..
- 3. Scroll down to **Mute**, then press the left soft key  to **Enter**.

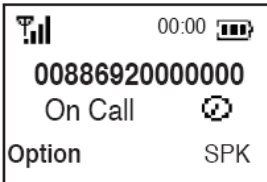


- 4. Scroll up or down to **On** or **Off**, depending on your preference, then press left soft key  to **Select**. A **✓** mark appears before your choice.

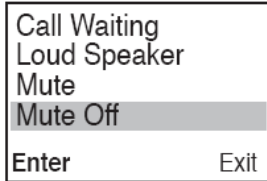
Press the right soft key  to exit and go **Back** to the previous screen, abandoning the choice.



- 5. The following screen appears. Note the  icon, indicating that the current call is in mute mode.





- 6. To disable Mute mode, press **Option** and scroll down to **Mute Off**, then press the left soft key.

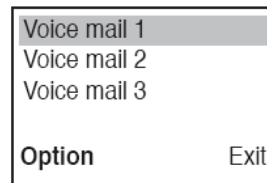
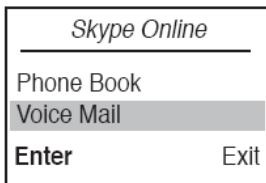





4.3 Retrieving recorded messages

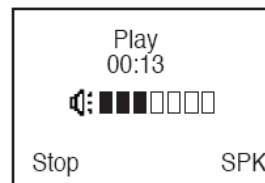
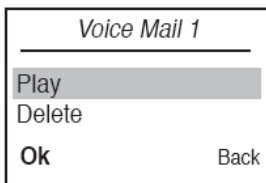
Retrieving voice mail


To retrieve voice mail:

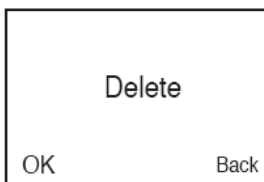
1. From the Skype™ menu, scroll down to **Recorded Msg**, then press the left soft key to  to **Enter**.
2. Scroll up or down to select the voice mail message you want to retrieve, then the left soft key press  to open the **Option** screen.




3. Select either to **Play** or **Delete** the voice mail, then press the left soft key  for **Ok**.
4. The following screen appears when select Play. Press the left soft key  to stop. Press the right soft key  to enable the loud speaker.



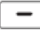
5. The following screen appears when select Delete. Press the left soft key  the delete the voice mail.

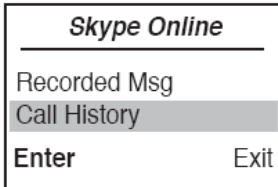


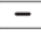
Important. If you choose to delete the voice mail, a succeeding screen displays a message confirming the action. Press the left soft key  for **Ok**. You cannot undo this action.

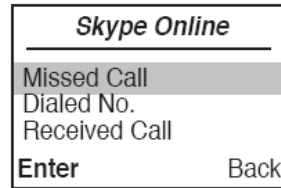
4.4 Viewing/clearing the call history



To view the call history:

1. From the Skype™ menu, scroll down to **Call History**, then press the left soft key  to **Enter**.

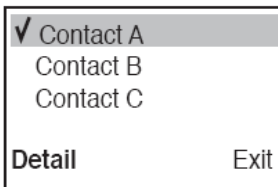




2. Scroll up or down to highlight the type of call you want to view, then press the left soft key  to **Enter**.

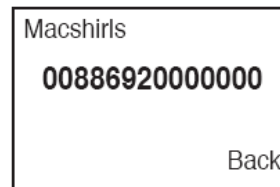


3. Scroll up or down to select a contact name, then press the left soft key  to open the **Detail** screen, or press the right soft key  to **Exit**.



A ✓ mark appears before your choice.

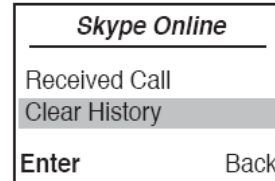
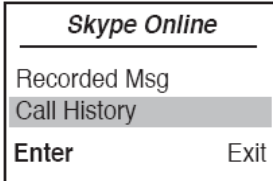




4. The selected contact's Skype™ account name and/or phone number appears on the next screen. Press  to call the selected contact, or press the right soft key  to go **Back** to the previous screen.

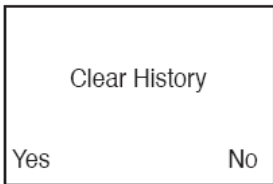


To clear the call history:

1. From the Skype™ menu, scroll down to **Call History**, then press the left soft key  to **Enter**.
2. Scroll up or down to highlight **Clear History**, then press the left soft key  to **Enter**.



3. The Clear History confirmation screen appears. Choose **Yes** to clear the history, or **No** to return to the previous screen.
4. If you chose **Yes**, a message appears, prompting you to confirm the action. Press the left soft key  for **Yes**, or press the right soft key  for **No**.




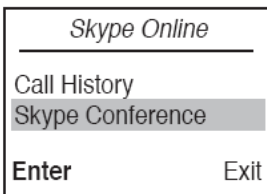
4.5 Hosting a Skype™ conference call






Note. You can hold a Skype™ conference call with one host and up to four participants. System requirement to hold a Skype™ conference call with four participants: At least 1.5GHz processor; at least 512MB RAM; at least 40MB free disk drive space; internet connection: at least 256 Kbps.

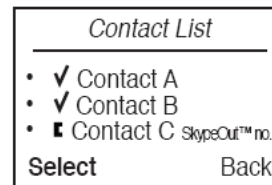
To host a Skype™ conference call


1. From the Skype™ menu, scroll down to **Conference Call**, then press the left soft key  to **Enter**.





2. The next screen shows the contacts who are online and their corresponding SkypeOut™ phone number, indicated by the  icon. Scroll up or down to highlight a participant's name, then press the left soft key  to **Select**. Repeat the process until you have chosen all participants.

A “.”mark appears before your choice(s). To remove the contact from the participants' list, press the left soft key  to deselect.





3. Press  to make the conference call.

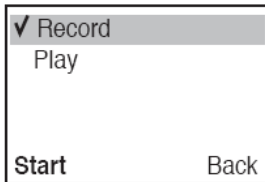




4. When connected, press the left function key  for more call options or press the right function key  to enable the hands-free feature (SPK).

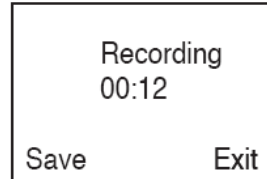
Use the **Up/Down** key to increase/decrease the speaker volume.


To terminate the call, press .

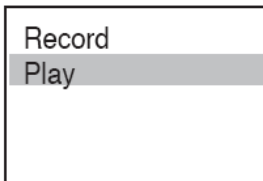
7. Highlight **Record**, then press the left soft key  to **Start**. To listen to the recorded greeting, scroll down to **Play** then press the left soft key  to **Start**.



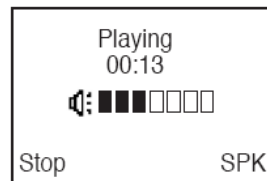
8. When record is in progress, press the left soft key  to save, press the right soft key  to abort.



9. To play the greeting message recorded, scroll up or down to **Play**, then press the left soft key .



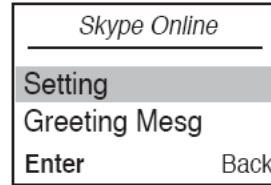
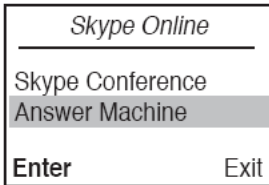
10. Playing message recorded screen displays as below:



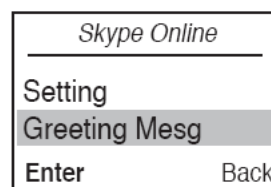
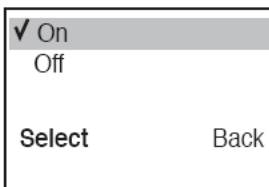
4.6 Using the Answer Machine

To use the answering machine feature:

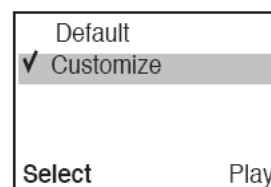
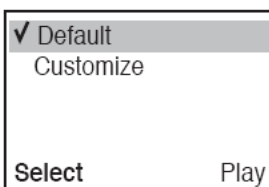
1. From the Skype menu, scroll down to **Skype Conference**, then press (left) to **Enter**.
2. The next screen automatically highlights **Setting**. Press (left) to **Enter**.





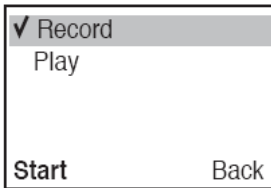
3. Scroll up or down to **On** or **Off**, depending on your preference, then press (left) to **Select**. A **✓** mark appears before your choice.
4. To choose the greeting message to use, go back to the Answer Machine menu. Scroll down to **Greeting Msg**, then press (left) to **Enter**.





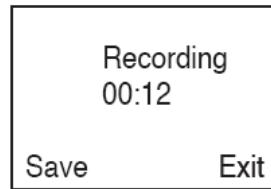
5. Scroll up or down to choose the greeting message to use, then choose **Select**. Choose **Play** to listen to the default greeting.
6. If you chose **Customize**, you may record your own greeting message by pressing the right function key to **Edit**.




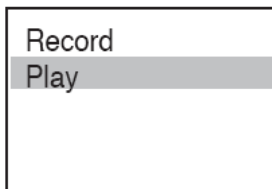
7. Highlight **Record**, then press the left soft key  to **Start**. To listen to the recorded greeting, scroll down to **Play** then press the left soft key  to **Start**.



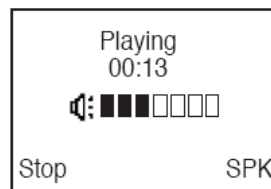
8. When record is in progress, press the left soft key  to save, press the right soft key  to abort.



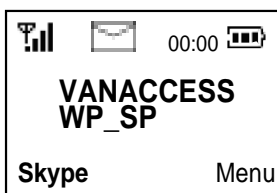
9. To play the greeting message recorded, scroll up or down to **Play**, then press the left soft key .



10. Playing message recorded screen displays as below:



11. If there is a message left on the answer machine, the idle page shows an icon indicator.



Refer to 2.2.3 Answer Machine Settings to set the waiting time before record.

Appendix

Reference information

This chapter describes PC-cillin firewall settings and Windows Media Player playlist creating, and provides safety notices, an FAQ section as well as VANACCESS' contact information.



A.1 Setting PC-cillin™

If you installed PC-cillin™ Internet Security software in your computer, make the following settings before installing WP0001 Utility.

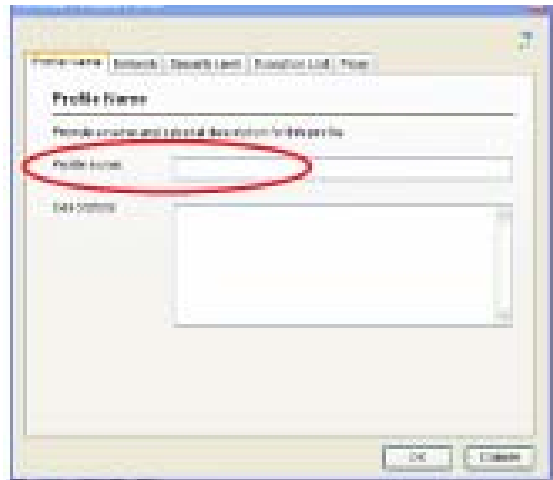
1. Open **Trend Micro PC-cillin Internet Security**, click **Network Security** tab, then click **Personal Firewall**.



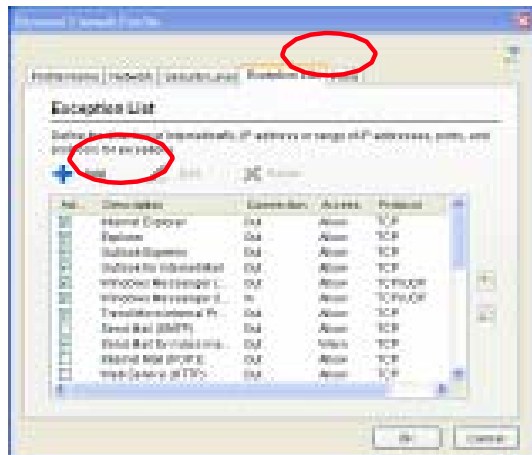
2. On **Personal Firewall** screen, click **Add**.



4. Key in **VANACCESS** in Profile name field, then click **OK**.

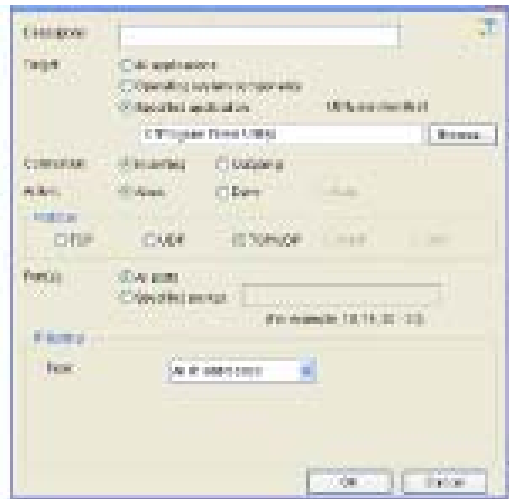


4. Select **Exception List** tab, and click **Add**.



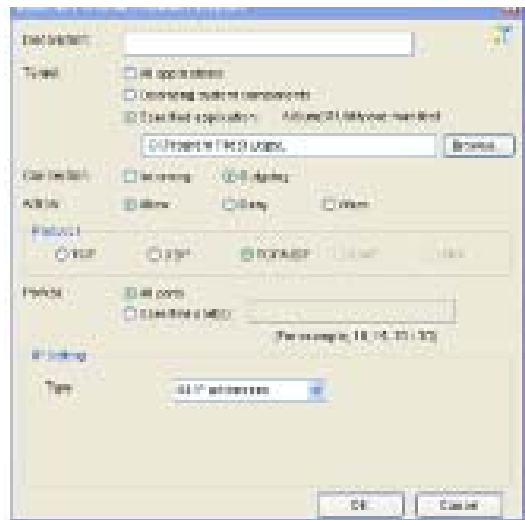
5. Add WPIIn

- a. Description: **WPIIn**
- b. Target: Select Specified application and point to the location where the application is saved.
- c. Connection: **Incoming**
- d. Action: **Allow**
- e. Protocol: **TCP/UDP**
- d. Port(s): **All ports**
- f. IP Setting: **All IP Addresses**



6. Add WPOut

- a. Description: **WPOut**
- b. Target: Select Specified application and point to the location where the application is saved.
- c. Connection: **Outgoing**
- d. Action: **Allow**
- e. Protocol: **TCP/UDP**
- d. Port(s): **All ports**
- f. IP Setting: **All IP Addresses**



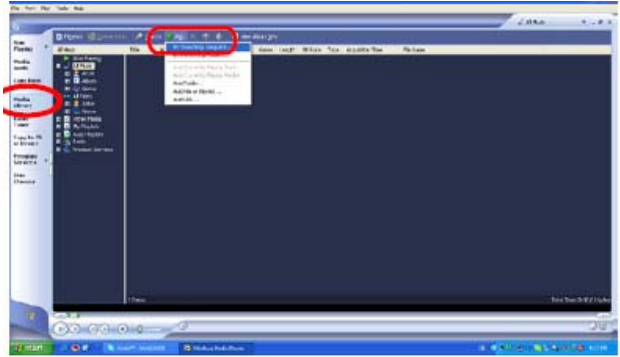
7. Back to the **Personal Firewall** screen, select **VANACCESS** in Choose profile field, and then click **Apply**.



A.2 Creating a playlist

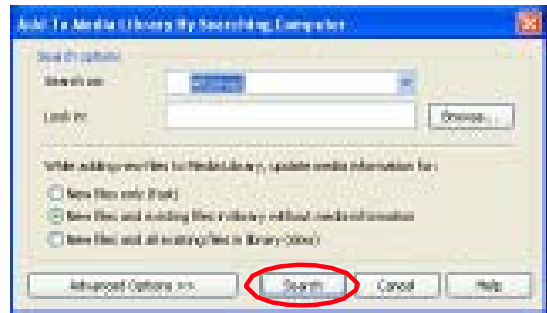
VANACCESS WP0001 provides WiFi music function. It supports Windows Media Player 9 or later version. You may create your own music playlist according to the following steps

1. Open Windows Media Player, click **Media Library > Add > By Searching Computer...**

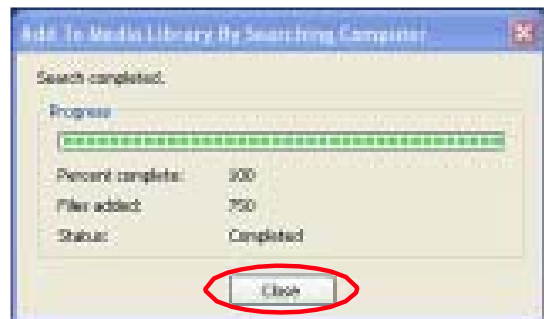


2. Click **Browse** to search for music files.

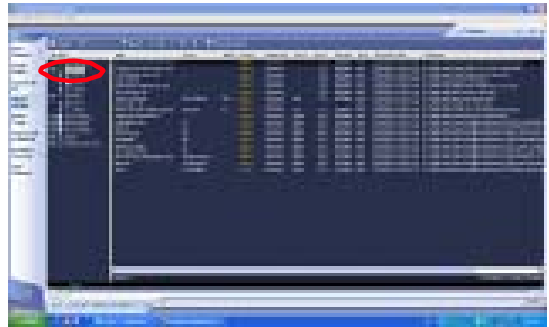
Or select All **Drivers** in the **Search On** field and then click **Search** to search all the music files in your computer.



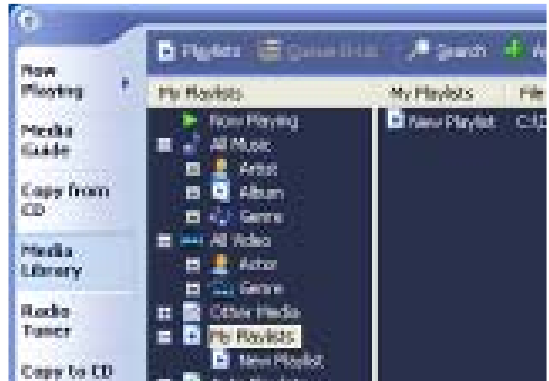
3. Click **Close** when search is complete.



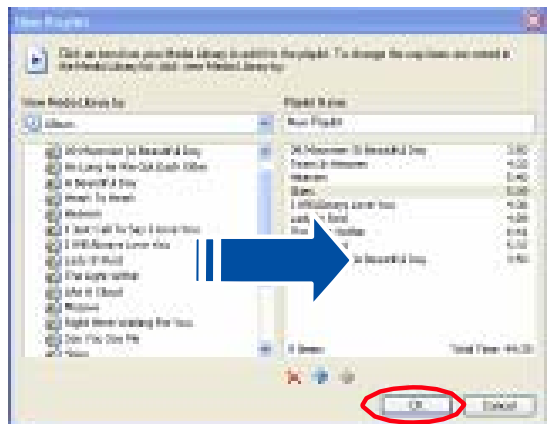
4. Click **All Music** to display all music found.



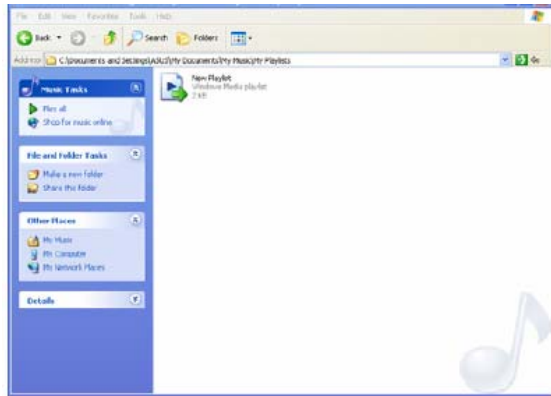
5. Right click **My Playlist**, and then press **New...**



6. Key in a new playlist. Double click a song to select for the playlist, and then press **OK**.



7. The music files are saved in **My Document/My Music/My Playlist.**



8. Refer to **2.2.5 WiFi Music** to play music with this phone, after you finish creating a playlist.

A.3 Notices

FEDERAL COMMUNICATIONS COMMISSION INTERFERENCE STATEMENT

This equipment has been tested and found to comply with the limits for a Class B digital device, pursuant to Part 15 of the FCC Rules. These limits are designed to provide reasonable protection against harmful interference in a residential installation. This equipment generates uses and can radiate radio frequency energy and, if not installed and used in accordance with the instructions, may cause harmful interference to radio communications. However, there is no guarantee that interference will not occur in a particular installation. If this equipment does cause harmful interference to radio or television reception, which can be determined by turning the equipment off and on, the user is encouraged to try to correct the interference by one or more of the following measures:

- Reorient or relocate the receiving antenna.
- Increase the separation between the equipment and receiver.
- Connect the equipment into an outlet on a circuit different from that to which the receiver is connected.
- Consult the dealer or an experienced radio/TV technician for help.

CAUTION:

Any changes or modifications not expressly approved by the party responsible for compliance could void the users authority to operate the equipment.

This device complies with Part 15 of the FCC Rules. Operation is subject to the following two conditions:

- (1) This device may not cause harmful interference and
- (2) This device must accept any interference received, including interference that may cause undesired operation.

A.4 Safety statements

Regulatory Information/Disclaimers

Installation and use of this Wireless LAN device must be in strict accordance with the instructions included in the user documentation provided with the product. Any changes or modifications (including the antennas) made to this device that are not expressly approved by the manufacturer may void the user's authority to operate the equipment. The manufacturer is not responsible for any radio or television interference caused by unauthorized modification of this device, or the substitution of the connecting cables and equipment other than manufacturer specified. It is the responsibility of the user to correct any interference caused by such unauthorized modification, substitution or attachment. Manufacturer and its authorized resellers or distributors will assume no liability for any damage or violation of government regulations arising from failing to comply with these guidelines.



CAUTION: To maintain compliance with FCC's RF exposure guidelines, this equipment should be installed and operated with minimum distance [20cm] between the radiator and your body. Use on the supplied antenna. Unauthorized antenna, modification, or attachments could damage the transmitter and may violate FCC regulations.

Safety Information

In order to maintain compliance with the FCC RF exposure guidelines, this equipment should be installed and operated with minimum distance [20 cm] between the radiator and your body. Use only with supplied antenna. Unauthorized antenna, modification, or attachments could damage the transmitter and may violate FCC regulations.



CAUTION: Any changes or modifications not expressly approved in this manual could void your authorization to use this device.

FCC RF Radiation Exposure Statement

This equipment complies with FCC RF radiation exposure limits set forth for an uncontrolled environment.

This equipment must not be co-located or operating in conjunction with any other antenna or transmitter.

Maximum SAR Measurement (1g)

Head: 802.11b=0.815 W/kg, 802.11g=0.466 W/kg

Body: 802.11b=0.352 W/kg, 802.11g=0.225 W/kg

Radio waves may affect electronic equipment or medical devices (e.g., pacemakers), which may cause malfunctions and possible injuries. If you use a pacemaker or other medical device, consult your physician or the manufacturer of the medical device before using the wireless networking feature.

Industry Canada regulatory information

Operation is subject to the following two conditions:

- (1) This device may not cause harmful interference and
- (2) This device must accept any interference received, including interference that may cause undesired operation.

Declaration of Conformity

This product complies with the Radio & Telecommunication Terminal Equipment Directive (1995/5/EC), the Electromagnetic Compatibility Directive (89/336/EEC), and Low Voltage Directive (73/23/EEC).

Compliance with these directives implies conformity to the following European Standards:

EN 55022, EN55024, EN 300 328, EN 301 489-1 & 17, EN 60950, EN 50360, EN 50361

EU RF Exposure Statement

This equipment complies with EU RF radiation exposure limits of 2 W/kg. 802.11b=0.439 W/kg, 802.11g=0.25 W/kg

Wireless Operation Channel for Different Domains

North America through Ch11	2.412-2.462 GHz	Ch01
Japan Ch01 through Ch11	2.412-2.462 GHz	
Europe through Ch11	ETSI 2.412-2.462 GHz	Ch01

France Restricted Wireless Frequency Bands

Some areas of France have a restricted frequency band. The worst case maximum authorized power indoors are:

- 10 mW for the entire 2.4 GHz band (2400 MHz–2483.5 MHz)
- 100 mW for frequencies between 2446.5 MHz and 2483.5 MHz



NOTE: Channels 10 through 13 inclusively operate in the band 2446.6 MHz to 2483.5 MHz.

There are few possibilities for outdoor use: On private property or on the private property of public persons, use is subject to a preliminary authorization procedure by the Ministry of Defense, with maximum authorized power of 100mW in the 2446.5–2483.5 MHz band. Use outdoors on public property is not permitted.

In the departments listed below, for the entire 2.4 GHz band:

- Maximum authorized power indoors is 100 mW
- Maximum authorized power outdoors is 10 mW

Departments in which the use of the 2400–2483.5 MHz band is permitted with an

EIRP of less than 100mW indoors and less than 10mW outdoors:

01 Ain Orientales	02 Aisne	03 Allier	05 Hautes Alpes
08 Ardennes	09 Ariège	11 Aude	12 Aveyron
16 Charente	24 Dordogne	25 Doubs	26 Drôme
32 Gers	36 Indre	37 Indre et Loire	41 Loir et Cher
45 Loiret	50 Manche	55 Meuse	58 Nièvre
59 Nord	60 Oise	61 Orne	63 Puy du Dôme
64 Pyrénées Atlantique	66 Pyrénées	67 Bas Rhin	68 Haut Rhin
70 Haute Saône	71 Saône et Loire	75 Paris	82 Tarn et Garonne
84 Vaucluse	88 Vosges	89 Yonne	90 Territoire de Belfort
94 Val de Marne			

This requirement is likely to change over time, allowing you to use your wireless LAN card in more areas within France. Please check with ART for the latest information (www.art-telecom.fr)



NOTE: Your WLAN Card transmits less than 100 mW, but more than 10 mW.

UL Safety Notices

Required for UL 1459 covering telecommunications (telephone) equipment intended to be electrically connected to a telecommunication network that has an operating voltage to ground that does not exceed 200V peak, 300V peak-to-peak, and 105V rms, and installed or used in accordance with the National Electrical Code (NFPA 70).

When using the device, basic safety precautions should always be followed to reduce the risk of fire, electric shock, and injury to persons, including the following:

- **Do not use** the device near water, for example, near a bath tub, wash bowl, kitchen sink or laundry tub, in a wet basement or near a swimming pool.
- **Do not use** the device during an electrical storm. There may be a remote risk of electric shock from lightning.
- **Do not use** the device in the vicinity of a gas leak.

Required for UL 1642 covering primary (nonrechargeable) and secondary (rechargeable) lithium batteries for use as power sources in products. These batteries contain metallic lithium, or a lithium alloy, or a lithium ion, and may consist of a single electrochemical cell or two or more cells connected in series, parallel, or both, that convert chemical energy into electrical energy by an irreversible or reversible chemical reaction.

- **Do not** dispose the device battery pack in a fire, as they may explode. Check with local codes for possible special disposal instructions to reduce the risk of injury to persons due to fire or explosion.
- **Do not** use power adapters or batteries from other devices to reduce the risk of injury to persons due to fire or explosion. Use only UL certified power adapters or batteries supplied by the manufacturer or authorized retailers.

Power Safety Requirement

Products with electrical current ratings up to 6 A and weighing more than 3 Kg must use approved power cords greater than or equal to: H05VV-F, 3G, 0.75 mm² or H05VV-F, 2G, 0.75 mm².

Nordic Cautions

CAUTION! Danger of explosion if battery is incorrectly replaced. Replace only with the same or equivalent type recommended by the manufacturer. Dispose of used batteries according to the manufacturer's instructions. (English)

ATTENZIONE! Rischio di esplosione della batteria se sostituita in modo errato. Sostituire la batteria con una di tipo uguale o equivalente consigliata dalla fabbrica. Non disperdere le batterie nell'ambiente. (Italian)

VORSICHT! Explosionsgefahr bei unsachgemäßen Austausch der Batterie. Ersatz nur durch denselben oder einem vom Hersteller empfohlenem ähnlichen Typ. Entsorgung gebrauchter Batterien nach Angaben des Herstellers. (German)

ADVARSELI! Lithiumbatteri - Eksplosionsfare ved fejlagtig håndtering. Udskiftning må kun ske med batteri af samme fabrikat og type. Levér det brugte batteri tilbage til leverandøren. (Danish)

VARNING! Explosionsfara vid felaktigt batteribyte. Använd samma batterityp eller en ekvivalent typ som rekommenderas av apparattillverkaren. Kassera använt batteri enligt fabrikantens instruktion. (Swedish)

VAROITUS! Paristo voi räjähtää, jos se on virheellisesti asennettu. Vaihda paristo ainoastaan laitevalmistajan suosittelemaan tyyppiin. Hävitä käytetty paristo valmistajan ohjeiden mukaisesti. (Finnish)

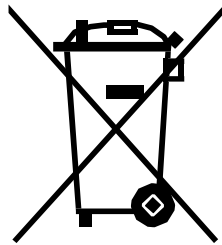
ATTENTION! Il y a danger d'explosion s'il y a remplacement incorrect de la batterie. Remplacer uniquement avec une batterie du même type ou d'un type équivalent recommandé par le constructeur. Mettre au rebut les batteries usagées conformément aux instructions du fabricant. (French)

ADVARSEL! Eksplosjonsfare ved feilaktig skifte av batteri. Benytt samme batteritype eller en tilsvarende type anbefalt av apparatfabrikanten. Brukte batterier kasseres i henhold til fabrikantens instruksjoner. (Norwegian)

注意！この装置は、現在設置されている場所で妨害波の測定がされた情報技術装置です。この場所以外で使用する場合は、その場所で、再び妨害波の測定が必要となります。(Japanese)

Proper Disposal

The symbol of the crossed out bin indicates that the product (electrical and electronic equipment) should not be placed in municipal waste. Check local regulations for disposal of electronic products.



Safety Warnings

Read the following safety warnings carefully before using your cell phone.

- This equipment is intended for use with power supplied from supplied battery charger(s) and/or power supply unit(s). Other usage will invalidate any certification given to this apparatus and may be dangerous.
- Switch off your phone when in an aircraft. The use of wireless phones in an aircraft may be dangerous to the operation of the aircraft, disrupt cellular networks, and may be illegal. Failure to observe this instruction may lead to suspension or denial of phone services to the offender, legal action or both.
- Do not use the phone or phone equipment when at a refueling point.
- Observe restrictions on the use of radio equipment in fuel depots, chemical plants, or where blasting operations are in progress.
- The use of the Alert device to operate a vehicle's lights or horn on public roads is not permitted.

You **MUST** exercise proper control of your vehicle at all times. Observe the following safety precautions when driving:

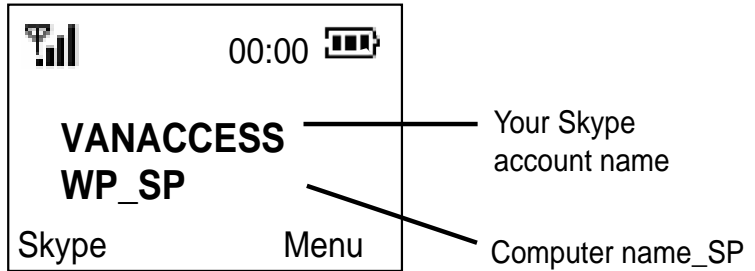
- Do not use a hand-held telephone or microphone while you are driving.
- When driving, find a safe place to stop the vehicle before using the phone.
- Do not speak into a hands-free microphone if it will distract you from driving.
- You **MUST NOT** stop on the hard shoulder of a motorway to answer or make a call, except in an emergency.
- The radio equipment should be connected to the antenna via a non-radiating cable (e.g. coaxial cable). The antenna must be mounted in a position such that no part of the human body will normally rest close to any part of the antenna unless there is an intervening metallic screen, such as a metallic roof.

NOTES:

- In some areas where electric current is unstable, it is recommended that you plug the charger to an AVR (AC Voltage Regulator) instead of direct connection to a power outlet. Unstable power current may damage the charger and/or the device.
- You can connect the USB charger or USB data cable to the device in only one orientation. Incorrect insertion of the cable connector may cause short circuiting and may damage the device.

A.5 Troubleshooting

When the phone and wireless settings are configured properly, the main display should show the following. This means that the phone is ready to use.



Following are some situations you might encounter, indicating that there is a problem with the connection, and the possible actions you can take.

Message displayed	Problem description to take	Action
WiFi Disconnected	<ol style="list-style-type: none"> 1. The phone was not configured properly. 2. Communication between the phone and the Wireless Link USB dongle is not established. 	<p>Reconfigure the phone settings.</p> <p>See section “2.2.1 Phone Configuration”</p>
No Service	<ol style="list-style-type: none"> 1. The communication between the phone and the Wireless Link USB dongle is established. 2. The WP0001 Utility has not been launched. 	<p>See section “2.2 Configuring the WP0001 Utility settings” to launch the WP0001Utility.</p>
Skype™ Offline	<ol style="list-style-type: none"> 1. Skype™ is not launched on your PC or logged in with personal account. 2. There is no Internet access. 	<p>Make sure that you have Internet access and that you have launched and logged into Skype™</p>

A.6 FAQ

This section provides solutions to problems that may occur or questions commonly encountered during the installation and operation of the VANACCESS WP0001 Wireless Music Phone. Read the description below to solve your problems. If you cannot find an answer here, check the VANACCESS contact information at the end of the user manual.

Q1. Why is there no dial tone when I press the Talk & Recall button?

- A1. Either the Wireless Link USB dongle is not properly connected to the PC, the handset is too far from the Wireless Link USB dongle, or the battery is low (low battery icon is displayed).
- Check the connections.
 - Move closer to the Wireless Link USB Dongle unit.
 - Charge the battery.
 - If there is something wrong with Skype Program itself, please restart Skype.

Q2. Why does the screen show “WiFi Disconnect”?

- A2. When the phone is out of the Wireless Link USB dongle’s operating range, the phone will keep accessing its signal source for 30 seconds. If detecting the signal fails, the screen shows the message “WiFi Disconnect” and the goes into sleep mode.

To regain wireless access, move the handset closer to the Wireless Link USB dongle and press any key on the handset for access retrieval.

Q3. Why is the battery icon “empty” although the handset has been charged for 24 hours?

- A3. The handset might not be placed properly on the cradle or might not be connected to the charger correctly. It is also possible that the handset’s battery is defective.
- Contact your dealer to purchase a new rechargeable battery.
 - Make sure the battery icon is scrolling. If it is not, the battery is not charging.

Q4. Why is there no symbol on the display?

- A4. This could mean that the battery is not charged or the Phone Kit is not properly connected.

- Verify that you have set up the Phone Kit properly.
- Charge the battery.

Q5. Why is the audio quality poor sometimes ? (crackles/echoes, etc.)

A5. There may be interference from nearby electrical appliances or the Wireless Link USB dongle is installed in a room with thick walls. If this is the case, move the PC to a different location. If the handset is too far from the Wireless Link USB dongle, move the handset closer.

Q6. Why can I not hear the other party clearly? Why is the speaker too loud/ too quiet?

A6. The speaker volume on your PC or on the handset may be set too low. Adjust the volume to get better effect.

Q7. Why does the phone not ring when a call comes in?


A7. The ringer may be off or too small to hear. Adjust the volume of the ringer.

Q8. Why does the contact list/user status return a “NO SERVICE” message?

A8. This may be caused by not starting or logging into Skype™ properly. Verify that you are logged into Skype™ and the program is running properly.

Another cause may be that the WP0001 Utility or Wireless Link USB dongle driver has not been launched on the PC, or the dongle plug may be disconnected. Verify that the WP0001 Utility and Wireless Link USB dongle driver are functioning properly and that the dongle plug is properly connected. Also, verify that the PC is not in standby/hibernate mode.

Q9. Why can I not call an ordinary phone number?

A9. If 00, + or 011 is omitted, enter 00, + (double press  key) or 011 before the number you are dialing. If your Skype™ account has too little or no credit left, purchase more credits on the Skype™ website. The handset may have lost its link. Verify that the handset has a link with the Wireless Link USB dongle.

Q10. Why am I not getting any tone response from Skype™?

A10. Either the Skype™ or the PC application have not started, the USB dongle is not plugged in, your PC is in standby/hibernate mode, or your other party is offline.

- Make sure both Skype™ and the PC application is/are started on the PC and running properly.
- Make sure the phone is set up correctly.
- Wait for the remote party to be online.

Q11. Why can I not hear any sound from the phone while the Wireless Link USB dongle is plugged in to the PC and the wireless setup is properly established?

A11. When the Wireless Link USB dongle is plugged in to the USB port of your PC, the Phone Voice stream will be routed to the handset. If you cannot hear any voice from the phone, check the setting of Sound Devices in Skype™. Go to **Skype™ > Tools > Options > Sound Devices** and make the following settings:

Audio In: Virtual Cable 1

Audio Out: Virtual Cable 2

Ringling: Virtual Cable 2

Q12. Why can I not hear any sound from the PC speakers for normal PC operation while the Wireless Link USB Dongle is plugged in to the PC?

A12. The PC default audio setting might be in the wrong order. You can change back the setting of your PC audio by going to **Control panel > Sound > Speech and Audio Device > Sound and Audio Device > Audio. Check Only use default devices.**

Q13. What will I do if the phone is out of operating range? How come no signal is detected?

A13. When the phone is out of the Wireless Link USB dongle's operating range, the phone will keep accessing its signal source for 30 seconds. If detecting the signal fails, the screen shows the message "**WiFi Disconnect**" and then goes into sleep mode.

To regain the connection, move the handset closer to the Wireless Link USB dongle and press any key on the handset for access retrieval.

Q14. Why can I not hear any music when using WiFi Music on the phone?

A14. Please check whether the setting of Windows Media Player is muted or not. If yes, disable the setting.

Q15. What will I do if I would like to use other Skype devices, or headset rather than this phone? What if I cannot hear any sound from other Skype devices or headset rather than this phone?

A15. If you cannot hear any voice from other Skype devices or headset, you may

1. Completely turn off the software utility of this phone, WP0001 Utility, and restart Skype™

2. Check the setting of Sound Devices in Skype™. Go to **Skype™ > Tools > Options > Sound Devices** and make the following settings:

Audio In: Desired Skype Device or windows default device

Audio Out: Desired Skype Device or Windows default device

Ringling: Desired skype Device or Windows default device

