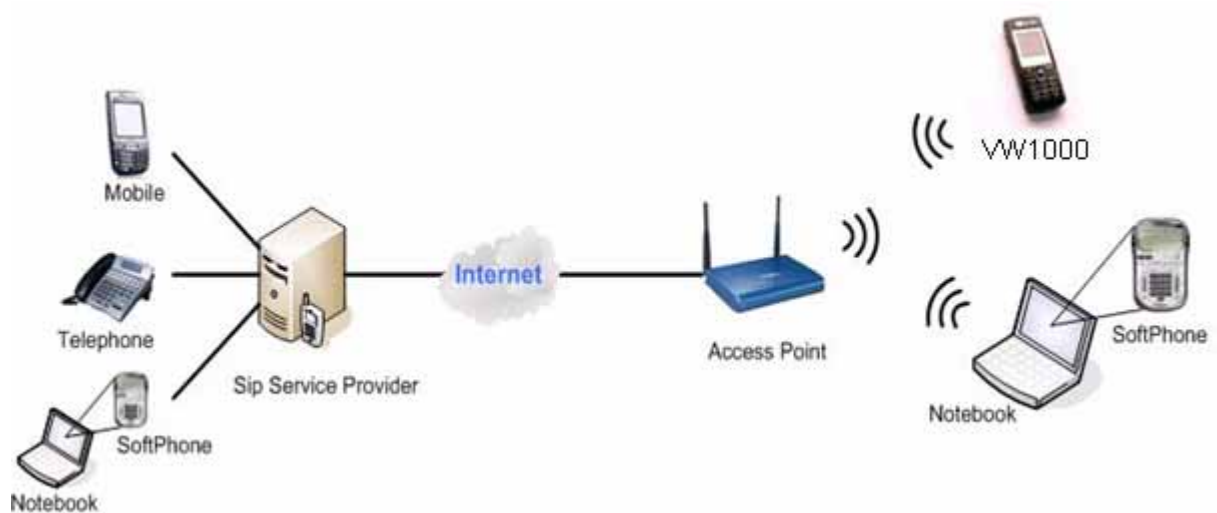


User Manual

Wi-Fi SIP IP Phone VW1000



VW1000 Using Diagram

INDEX

VW1000 Using Diagram.....	1
INDEX	1
1 Overview	3
2 User Interface.....	4
2.1 LCD screen.....	4
2.2 Keys	4
2.3 Idle screen	5
2.3.1 Key lock	5
2.3.2 Handset name.....	5
2.3.3 Silent mode	5
2.3.4 Battery status.....	5
2.3.5 Direct menu's.....	5
3 Battery	5
3.1 Installing the battery.....	6
3.2 Charging the battery	6
4 Powering on/off	6
In Off mode:.....	6
In On mode:.....	6
5 First time start-up.....	6
6 Connect to Network.....	6
7 Enter your SIP accounts.....	6
7.1 P2P mode	6
7.2 Embedded SIP profile	7
7.3 Multi SIP profile input	7
7.3.1 SIP profile Items.....	7
7.3.2 Key in New Profile	7
7.3.3 Edit an existing profile	7
7.3.4 Activate a SIP Profile.....	7
8 Conversation modes.....	7
8.1 Hands free	7
8.2 Mute	7
8.3 Making a call.....	8
8.3.1 Direct dialing.....	8
8.3.2 Dialing from phonebook	8
8.3.3 Dialing from call log	9
8.4 Answering a call.....	9
9 Phone Menus	9
9.1 Phonebook.....	10
9.1.1 New Entry	10
9.1.2 Edit.....	10
9.1.3 Delete	11
9.1.4 Delete All.....	11
9.2 Call Log.....	11
9.2.1 Received Calls.....	11
9.2.2 Missed Calls.....	11
9.2.3 Dialed Calls.....	11
9.3 Phone Settings	12
9.3.1 Language.....	12
9.3.2 Ring Settings	12
9.3.3 Time/Date.....	13
9.3.4 Sounds.....	13
9.3.5 Display Settings	14
9.3.6 Master Reset.....	14
9.3.7 Firmware Upgrade	15
9.4 Access Points	17
9.4.1 Access Points	17
9.5 SIP Profiles.....	18
9.5.1 Peer to Peer	18

9.5.2	New Profile	18
9.5.3	Using the embed SIP number Service	19
9.5.4	Setup new SIP profile.....	19
9.6	WPS Registration	19
9.7	Information.....	19
10	VW1000 Specifications	20
11	VW1000 Radiation Pattern report	22
Appendix A: Warranty		22
Appendix B: CE, FCC, RoHs certificates		23
Appendix C: FQA in Setting up		23
11.1	When I make a telephone call, the call doesn't go through; instead, I hear a fast busy signal.	23
11.2	When my VW1000 appear DNS failure, how to fix this problem?	23
11.3	How should we use the embedded SIP accounts to call Skype etc.?	24

1 Overview

Thank you for choosing the VW1000 Wi-Fi SIP IP phone!

Using VW1000, you can make calls worldwide over the hotspot network without being tied to your computer. It can be used at the office, at home, airports, hotels etc. The VW1000 is a slim and smart design, wireless VoIP phone which supports IEEE802.11b/g, SIPv2.0, G.722, G.711a/u-law and more.

2 User Interface

The user interface consists of an 18 keys keypad, 5 way navigation key, microphone, speakers and a color LCD screen.



2.1 LCD screen

1.5 inches TFT LCD display

2.2 Keys

- LEFT SOFT KEY
- RIGHT SOFT KEY
- 0,1,2,3,4,5,6,7,8,9,*,# keys
- TALK ON (GREEN)
- TALK OFF/ POWER (RED)
- VOL UP
- VOL DOWN

Navigation key:

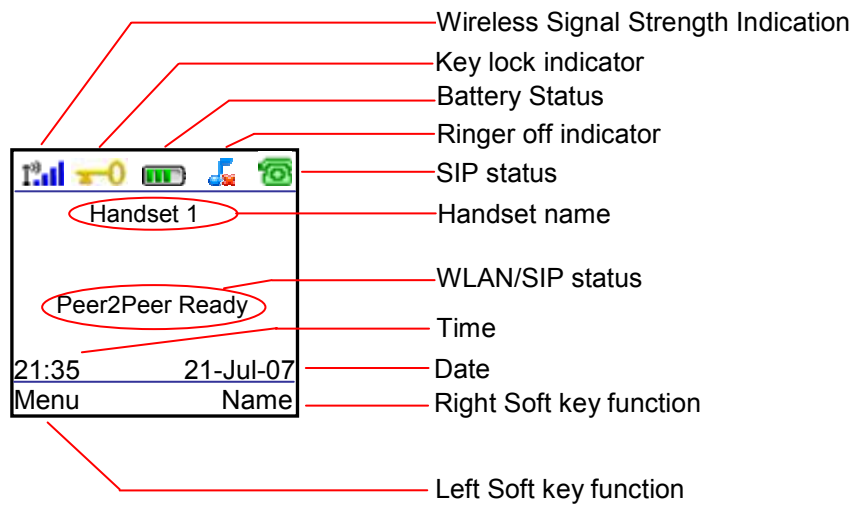
- UP
- DOWN
- LEFT
- RIGHT
- ENTER

Menu navigation can be done with the navigation menu completely:

- RIGHT Go one level deeper in the menu
- LEFT Go one level back in the menu
- UP/DOWN Walk through the items
- ENTER Select menu item (also one level deeper in the menu)

To escape the graphical menu the LEFT key should be held for 2 seconds (or press Back key or press RED key). The RED key can be used in any menu to quit the menu and return to the idle screen.

2.3 Idle screen



In idle mode the above screen is displayed (depending on the status).

2.3.1 Key lock

By pressing the # key for 2 seconds the keyboard will be locked and a key icon will be visible in the screen. Pressing the # key again for 2 seconds will unlock the keyboard and the icon will disappear.

2.3.2 Handset name

If a text was entered in the handset menu (Phone Settings, Display Settings, Handset Name) then this name will be displayed in the idle screen.

2.3.3 Silent mode

If the ringer volume was set off (Phone settings, Ring Settings, Volume) the silent mode icon will be display on top of the screen. The silent mode can be toggled from the idle screen by pressing the * key for 2 seconds.

2.3.4 Battery status

The battery is constantly monitored and its status is displayed in the screen. If the battery is almost empty, the icon will change color to orange.

2.3.5 Direct menu's

With the navigation key it is possible to enter some menus directly from the idle screen.

RIGHT	enter the call log menu
LEFT	enter the SIP profile menu
UP	enter the dialed calls log menu
DOWN	enter the phonebook menu directly

3 Battery

3.7v, 850mAh Li-ion battery

3.1 Installing the battery

This provides instructions for first-time installation and use of the IP Phone.

You will insert the battery into the WIFI IP Phone and then set it up for your wireless network and Internet phone service. Then you will be able to make and receive Internet phone calls.

To insert the battery, follow these instructions:

Press "Open" button at the phone back. Push the rear cover from top to bottom direction.

- Remove the cover of the battery compartment. Push down on the button and slide the cover downward.
- 2. Insert the battery. Make sure the metal contacts of the battery line up with the metal contacts of the battery compartment.
- 3. Insert the door and slide it upward until it snaps into place.

3.2 Charging the battery

Charging the battery is done through the USB connector. A USB cable is delivered with the VW1000 to connect to the adapter or the PC's USB bus.

Charging time for the battery will depend on the status of the battery. For an empty battery it will take approx 4 hours to charge it to full.

Note: we strongly suggest charging the new battery up to 10 hours for the first three times for battery long life using.

4 Powering on/off

In Off mode:

Pressing the TALK OFF key for about 2 second will switch on your VW1000 IP phone. A welcome screen will appear with a progress bar to indicate that it is busy. After a short while it will come up with the idle screen (see 2.3). If a default AP was configured before then it will try to connect to it, the status of this process will be indicated in the screen.

In On mode:

Pressing the TALK OFF key for 2 seconds will switch off the phone.

5 First time start-up

The Phone requires a wireless connection to an access point to be able to make or answer calls.

When powering on VW1000 for the first time there are no preferred networks in the phone memory.

After having connected to a network, it is possible to make IP calls within the network (Peer to peer or P2P). However, for making calls over the internet you must have a SIP account from a SIP provider and the settings must be entered in the VW1000.

Note: For some phone with the embedded SIP accounts at factory, users can use it at once when buy it.

6 Connect to Network

In the menu select the "Access Points" icon. A list is shown of the available stored networks or Access Points (max. 4 can be stored). The bottom choice in the list is always the "Search for AP's". By selecting this one the VW1000 will search for AP's and lists the results. By pressing Connect at a selected AP in the search result list the VW1000 tries to connect to the AP. If necessary a key should be entered by the user. After connection it will be saved as profile and the user is asked to set this as default connection. By confirming it will search and connect to this network automatically next time VW1000 is powered on.

If already 4 AP profiles are stored in the VW1000 and another one is connected then it will ask the user which profile to be replaced.

7 Enter your SIP accounts

7.1 P2P mode

If no SIP profiles are saved in the VW1000 then automatically the SIP mode is P2P. In that case you can only make calls via an IP number.

7.2 Embedded SIP profile

As a default settings, VW1000 was embedded one SIP profile at factory, which have the IP phone work at once when there is wifi internet service found.

7.3 Multi SIP profile input

Except the one default SIP profile, there are at least 3 profiles be set at the same time.

If there is one or more SIP profiles saved, then you have the choice which one to use. The P2P profile can also always selected, even if there are SIP profiles.

Select the "SIP profiles" icon and a list is shown of available profiles. By pressing the Options key you can edit an existing profile, make a new one or activate a profile.

7.3.1 SIP profile Items

Set Active	: Activates this profile
Edit SIP	: enter the SIP username
Edit Domain	: enter the SIP domain URL or IP
Edit Out Proxy	: enter the SIP proxy server URL or IP
Edit Stun	: enter the SIP stun server URL or IP
Save	: Save this existing profile
Save As...	: Saves this profile with new name
Delete	: Deletes this profile

7.3.2 Key in New Profile

Follow New Profiles, Press Options left soft key, edit SIP, next confirm.

Then edit Domain information by keying in URL or IP. Convert the inputting letters by pressing # button.

If the SIP service required, key in the Proxy and Stun server information.

When all the necessary information is entered correctly, go to Save or Save as...to be a new SIP profile name.

Note: Enter by keypad can be numeric, large letter, smaller letters. The button of # can convert between the input methods. The four options: "AB", "1-9" and "ab".

7.3.3 Edit an existing profile

If need edit the existing SIP profile, you just follow up the 7.3.2 steps of inputting a new SIP profile.

7.3.4 Activate a SIP Profile

Among the Five SIP Profiles, you can use the navigation buttons up and Down to active you preferred Profile.

8 Conversation modes

In the calling mode, by pressing the Left Soft key (Options), a menu (In Call Options) is opened. The choices are Mute and Hands free.

8.1 Hands free

In conversation it is possible to toggle between earphone and hands free. This can be done by pressing the Green button (Talk on key) or to select this from the call menu.

A speaker icon will inform the user that Hands free mode is active.

8.2 Mute

In the menu the microphone mute can be activated or deactivated. An icon will inform the user that mute is active. The Right soft key will open the phonebook.

The volume keys or Navigation Button can be used to adjust volume through the speaker.

8.3 Making a call



Making a call can be done in several ways:

- A. entering the destination number first,
- B. by selecting someone in your phonebook,
- C. By selecting someone in your call log.

For all these possibilities counts that if the name or number is in the display then by pressing the TALK ON button the number will be called.

8.3.1 Direct dialing

Direct calling can be done by entering a digit key in the idle screen. Then automatically a dialog is started to enter one of the following:

- Telephone number

- SIP account

If one SIP profile is active, it will start entering a telephone number and SIP number. In this dialog the user can change his choice for the entered account Nr between the 2 types (Tel nr, SIP Nr.). By pressing the TALK ON key (green key) the number will be dialed.



Note: Enter by keypad can be numeric, large letter, smaller letters. The button of # can convert between the input methods. The four options: "AB", "1-9" and "ab".

- IP address

If P2P profile is active, then it will start entering an IP number.

8.3.2 Dialing from phonebook

Select an entry in your phonebook and press the TALK ON key (green key). Now the number will be dialed.



8.3.3 Dialing from call log

When you are in one of the 3 call log list you can dial the number by pressing the TALK ON key (green key).

8.4 Answering a call

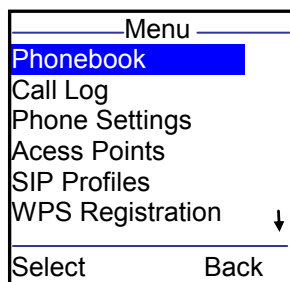
If an incoming call is available the VW1000 will indicate this by making a ring sound. If available the Caller ID is displayed on the screen. The user now can answer the phone by pressing the TALK ON key or the Accept key. Pressing the TALK OFF key (red key) will reject the call.

9 Phone Menus

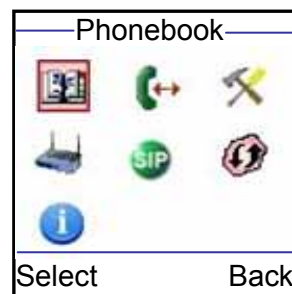
By pressing the Menu key (Left Soft Key) in the Idle screen the main menu is shown.

Main Menu:

- Phonebook
- Call Log
- Phone Settings
- Access Points
- SIP Profiles
- WPS Registration
- Information



Screen Text Menu



Screen Graphical Menu

9.1 Phonebook

List of all your contacts is displayed. Use up/Down navigation button to select entry.

Select one list. By pressing the Options key the following sub-menu is shown:

- New Entry
- Edit
- Delete
- Delete All

9.1.1 New Entry

Screen for entering name, SIP account, telephone number or IP address. First the name has to be entered. If done then press DOWN key and use LEFT/RIGHT key to select SIP, No or IP. If chosen then press DOWN key to enter the appropriate entry type.

Name:

Enter name here

SIP No IP

Entry type is SIP address if SIP is selected, telephone number if No is selected, IP address if IP is selected.

Press SAVE to save and exit.

Example for contacts:

Name: John

SIP account: 899100001@sip3.zheren.com

Name: Sue

Phone number: 0123456789

Name: Peter

IP: 202.060.10.9

9.1.2 Edit

Screen for editing name, SIP account, telephone number or IP address. The name is displayed and can be modified. If done then press DOWN key and use LEFT/RIGHT key to select SIP, No or IP. If chosen then press DOWN key to enter the appropriate entry type.

Name:

Enter name here

SIP No IP

Entry type is SIP address if SIP is selected, telephone number if No is selected, IP address if IP is selected.

Press SAVE to save and exit.

9.1.3 Delete

Dialog:

Delete *entry name*?

Yes/ No

The Left soft key is for YES, The Right soft key is for No.

9.1.4 Delete All

Dialog:

Do you really want to delete all the phonebook entries?

Yes/ No

The Left soft key is for YES, The Right soft key is for No.

9.2 Call Log

Submenu:

Received Calls

Missed Calls

Dialed Calls

9.2.1 Received Calls

List of received calls is shown. By pressing the TALK ON key the selected number is dialed.

9.2.2 Missed Calls

List of missed (unanswered) calls is shown. By pressing the TALK ON key the selected number is dialed.

9.2.3 Dialed Calls

List of dialed calls is shown. By pressing the TALK ON key the selected number is dialed. List will not contain double numbers, only time stamp will be refreshed if entry already exists in this log.

9.3 Phone Settings

Submenu:

- Language
- Ring Settings
- Time/Date
- Sounds
- Display Settings
- Master Reset
- Firmware Upgrade

9.3.1 Language

- English
- Français
- Português
- русский язык
- Nederlands
- Chinese Simple
- Chinese Traditional

9.3.2 Ring Settings

Submenu:

- Tone
- Volume
- Vibrator

9.3.2.1 Tone

Radio button menu:

- Melody 1
- Melody 2
- Melody 3
- Melody 4
- Melody 5

9.3.2.2 Volume

Graphical view for 5 volume setting.



9.3.2.3 Vibrator

Radio button menu:

Off

On

9.3.3 Time/Date

Submenu:

Set Time

Time Format

Set Date

Date Format

9.3.3.1 Set Time

Menu for entering time according to set time format.

9.3.3.2 Time Format

Radio button menu:

24 hours

am/pm

9.3.3.3 Set Date

Menu for entering time according to set date format.

9.3.3.4 Date Format

Radio button menu:

20-Jun-08

DD/MM/YY

MM/DD/YY

DD-MM-YY

DD.MM.YY

YY-MM-DD

9.3.4 Sounds

Checkbox menu:

Keypad Tone

Range Warning

Battery Low

9.3.5 Display Settings

Submenu:

Handset Name

Backlight Duration

Graphical Menu

Contrast

9.3.5.1 Edit handset Name

This item is for displaying the Handset name on the Second line of LCD. Menu is to enter a name for the handset. The name will be displayed in the idle screen.

9.3.5.2 Backlight Duration

These items if for controlling the LCD backlight duration. Radio button menu:

5s

10s

20s

40s

Keep always on

9.3.5.3 Graphical Menu

This item is for controlling the menu Screen **Graphical Menu or Screen Text Menu**

Off

On

9.3.5.4 Contrast

Graphical view for 4 contrasts settings

Use navigation button to adjust that.

9.3.6 Master Reset

Dialog:

Reset all settings to factory defaults. Continue?

Yes/ No

Press the Left Soft key to confirm and Right Soft Key is for No.

This item is for restoring all the settings to default setting (factory settings).

9.3.7 Firmware Upgrade

Dialog:

Phone must be connected to computer. Phone will now power down.

Continue / Cancel

Press the Left Soft key to Continue and Right Soft Key is for Cancel.

9.3.7.1 VW1000 upgrade guidance

The following steps will show you how to update the firmware of VW1000 by the attached USB cable.

Go to the site <http://www.voptech.com/download.asp> and download the necessary three files: VW1000_driver, DFUtility and VW1000 firmware. Uncompress them to a folder for later on use.

The recommended computer system can be Windows 2000, Windows XP, Vista etc. it need administrator right to login and execute the following installations. Below samples steps interface is by Windows XP.

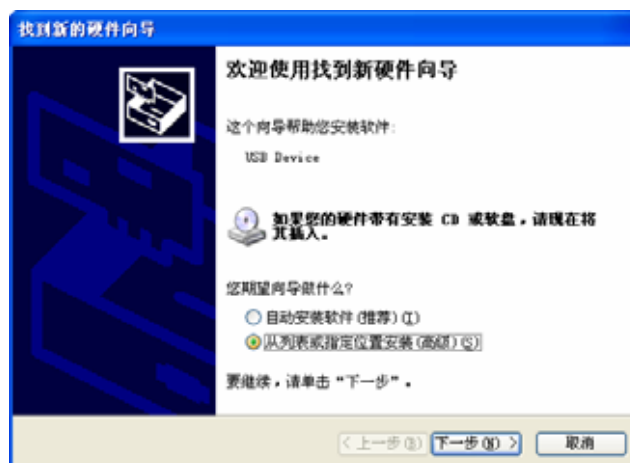
If it is the first time that your computer to upgrade the VW1000, you need follow below steps to install its driver first. If the driver had been installed previously, go ahead from Step B.

Step A

1. Plug the attached USB cable into computer available USB port.
2. Power on VW1000 and go to Menu Phone settings Firmware upgrade.
3. Press the OK button (top left key) then plug the USB cable another side into VW1000 within TWO seconds.



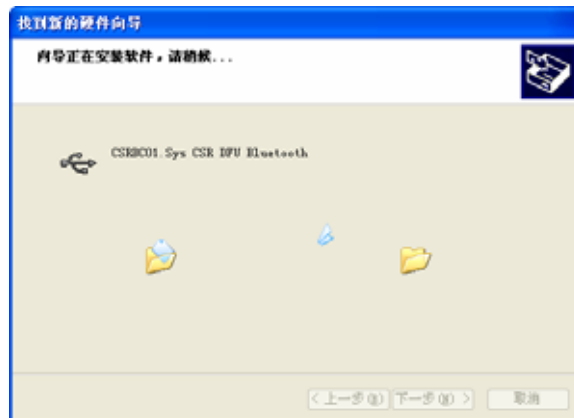
4. Now the phone will shut down and the computer will find the new hardware for USB device.



5. Browse the right VW1000 driver from the folder that downloaded just now.



6. Click NEXT to execute the installation for driver.



7. Finish the driver installation. Take off battery and restart VW1000 for the following upgrading.

Step B

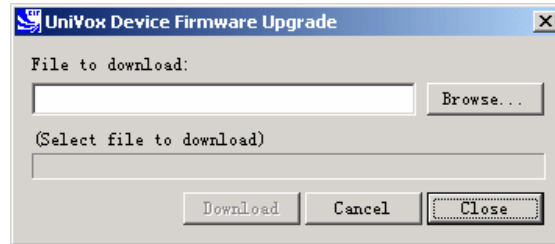
Plug the attached USB cable into computer available USB port.

Power on VW1000 then choose Menu Phone settings Firmware upgrade.

Press the OK button (top left key) then connect the USB cable another side into VW1000 within TWO seconds.



Now the phone shut down. Go to computer uncompressed folder DFUtility and open DFUtool.



1. Browse the VW1000 upgrade software folder and choose the desired phone firmware and download the new firmware to VW1000.
2. When the download process is finished, there will be a prompts for detaching device from USB.

Little Notice:

- *During the VW1000 upgrading, be sure NOT disconnect USB cable or power off computer until the process finished, or it will damage the phone and lose its warranty service from us.*
- *After finishing the upgrade, the VW1000 will restart automatically. It can charge from PC USB port.*
- *The timing of plugging into the USB cable is very important. If can not connect VW1000 with PC within 2 seconds, it will not upgrade firmware.*

9.4 Access Points

The required wireless router / Bridge should support IEEE 802.11b/g.

9.4.1 Access Points

This item shows the stored Access Point profiles. There are Four AP can be stored in this list.

At the bottom of list is "Search for AP's". By pressing Search, "Search for AP's" is selected the VW1000 will search for available networks or Access Points. The result will be listed in the screen. If the user connects to an AP it will be saved (if connected) and it will appear in the AP profiles list.

Pressing RIGHT or Options key while an AP is selected will open the following menu:

9.4.1.1 Connect

By selecting this choice the VW1000 will try to connect to this AP.

9.4.1.2 Access points IP Settings

Radio button menu:

- DHCP
- Static

By selecting Static one has to enter the IP address of your selected AP.

9.4.1.3 Security Settings

This listed the supported AP encryption. Key Options menu:

- WPA Passphrase
- WPA Key
- WEP64 Key
- WEP64 Passphrase
- WEP128 Key
- WEP128 Passphrase

9.4.1.4 Set to Default

By selecting the current AP will be made the default AP.

9.4.1.5 Delete

Delete this AP profile.

9.5 SIP Profiles

This profile is for entering the new or edits the SIP profiles for calling.

9.5.1 Peer to Peer

This item is for the P2P calling mode by using the IP address assigned by wireless router.

Submenu:

- Set Active

9.5.2 New Profile

Submenu:

- Set Active
- Edit SIP
- Edit Domain
- Edit Out Proxy
- Edit STUN
- Save
- Save As...
- Delete

This time is for entering the new profiles. VW1000 allow users to input at most 4 SIP profiles.

9.5.3 Using the embed SIP number Service

When you receive the VW1000, there will be one SIP number bundled in the phone. So it can make calls after VW1000 access the wireless internet network. The account has a little credit just for making SIP to SIP or SIP to land phones (about 10 minutes calling). When the hot point is useable, the phone will login the embed server automatically and the Phone bar on Right top screen will change from RED to GEEN color. It shows VW1000 has registered SIP server successfully.

9.5.4 Setup new SIP profile

Follow the steps below to setup your VW1000 by using the local Wireless Network. The SIP account should contact with your SIP server provider to get it.

- Press the Left soft key and select “SIP Profiles” menu screen, select New Profile.
- Select the Edit SIP and press the Left soft key (Select), enter your SIP number in the “SIP: User Name” and press the left soft key to input the SIP password.
- SIP: Display Name: this is your will to input your preferred Screen Display Name under the Logo.
- Select Edit Domain and press the Left soft key to see the interface as right diagram. Entering the URL server address such as “sip3.zheren.com” or use Navigation button up/ down to choose IP model inter such like this: “210.080.176.018”. Then to Next.
- SIP: Domain Port. Enter the server register port. The default SIP port: 5060.
- If the SIP server needs input the “Out Proxy” and “STUN” address and port just do as the above steps.
- Then browse down to “Save or Save As...” to save the profile name.



9.6 WPS Registration

Submenu:

- Pushbutton
- PIN

Such kinds of function need the Wireless router support. If the AP hasn't the WPS function, it can not use such function.

9.7 Information

Displays information about the VW1000, like:

- IP address
- AP name
- SIP account name
- Firmware version

MAC address

10 VW1000 Specifications

- LCD display: colour TFT 128x128, 65K colours. Adjustable contrast.
- Enhanced Power Saving Design for Extended Standby and Talk Time
- Longest standby time: 140 hours, Longest talk time: 7.5 hours.
- Easy Multi Dial: IP address, SIP number and URL address.
- Phonebook / call logs
- Call Reject / Redial
- Caller ID /Anonymous call
- Missed Call indicator
- Call Vibrating Alert
- Language support: English, French, Portuguese, Russian, Dutch, Chinese Simplified & Traditional.
- Hands Free / Mute / Earphone support
- Volume Control buttons
- • 5 ways navigation paddle
- Key Lock function
- Keypad Backlight
- Time / Date: 30 minutes backup while the battery is removed.
- Supports 802.11b/g, IEEE 802.1x, 802.11i,
- Support SIP v2.0 Standards
- Auto Wi-Fi (Wireless Fidelity) Hotspot Scan, Net Search
- Security Settings: WEP 64 / 128 bit encryption/ WPA / MD5 Authorization
- Supports WPS registration
- Supports up to 4 SIP profiles
- Supported codec: G711a/u-law, G722, {iLBC, G729a/b (TBA)}.
- Supports DTMF RFC2833 and RFC3261
- Comfort Noise Generation (CNG)
- Voice Activity Detection (VAD)
- Acoustic Echo Cancellation (AEC)
- Supports Stun server
- Supports Proxy
- Direct IP call without SIP registration
- USB charging and firmware upgrade.
- Light & breast pocket smart style design

Battery Life

Batteries are rechargeable and have a limited number of charge cycles. The batteries may eventually need to be replaced. Battery life will vary from the stated average by usage, configuration and environment.

Physical Size

- Phone dimension: 105 * 47 * 15mm
- Colour box size: 150 * 130 * 45mm
- Carton box size: 460 * 265 * 460 mm, 60pcs /carton
- Weight: about 80g

Temperature

- Operating Temperature: 0-40 °C
- Storage Temperature: -20-60 °C

Humidity

- Operating humidity: 20-80% (non-condensing)

Maximum 802.11b/g Channels

- (US, Canada), 13 (Europe)

Operating Frequency

- 2.4 – 2.4835 GHz (US, Canada, ETSI)

Data Rate

54M/s

Antenna Gain

3.3dBi

Certification

FCC Part 15B/15C

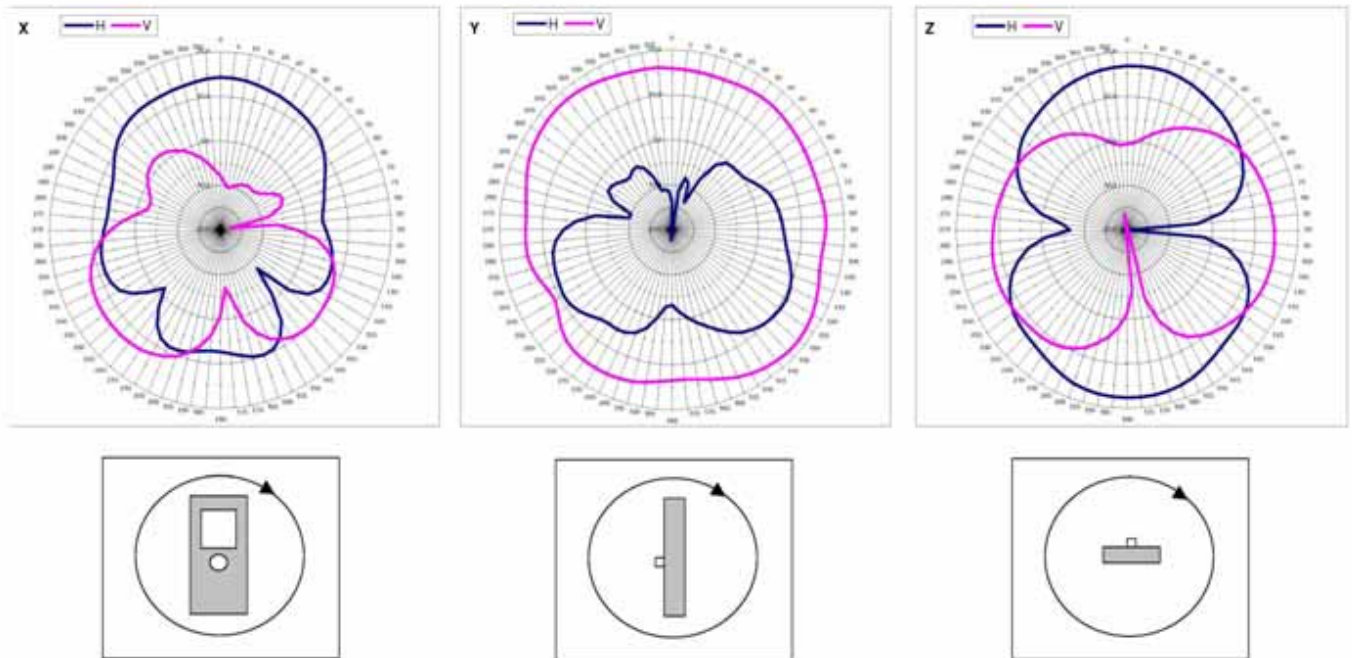
CE Class B

RoHs

SAR

EN60950

11 VW1000 Radiation Pattern report



Appendix A: Warranty

We warrants that the Product(s) shall be free from manufacturing defects in materials and workmanship for a period of one (1) years from the date of delivery provided that the Product was properly installed and used. Defects, malfunctions or failures of the warranted Product caused by damage resulting from acts of God (such as floods, fire, etc.), environmental and atmospheric disturbances, other external forces such as power line disturbances, host computer malfunction, plugging the board in under power, or incorrect cabling and damage caused by misuse, abuse and unauthorized alteration or repair are not warranted.

This warranty is limited to the repair and/or replacement, at our sole discretion, of the defective product during its warranty period. We will replace any product found to be defective within the first three months of purchase provided said product was properly installed and used. Customer must obtain a Return Merchandize Authorization (RMA) number prior to returning the defective Product to us for service. Customer agrees to insure the Product or assume the risk of loss or damage in transit, to prepay shipping charges and to use the original shipping container or equivalent. Customers may either seek assistance from the original dealer, or the closest Service Office. Repaired or replaced products are warranted for ninety (90) days from the date of repair or replacement, or for the remainder of the original products warranty period, whichever is longer.

Limitation of Liability

The provisions of the warranty are in lieu of any other warranty, whether expressed or implied, written or oral, and our liability arising out of the manufacture, sale or supplying of the product and its use, whether based on warranty, contract, negligence, product liability or otherwise shall not exceed the original cost of the product. In no event shall we be liable for unintended or consequential damages, including, but not limited to, loss of profits or use damages arising out of the manufacture sale or supplying of the product.

Appendix B: CE, FCC, RoHs certificates

This model has CE, FCC, RoHs certificates.

Appendix C: FQA in Setting up

This appendix provides solutions to problems that may occur during the installation and operation of the WIFI SIP IP Phone. Read the description below to solve your problems. If you can't find an answer here, check the website of your Internet phone service provider <http://www.voptech.com/download.asp>

11.1 When I make a telephone call, the call doesn't go through; instead, I hear a fast busy signal.

Go through this checklist until your problem is solved:

- a Follow these instructions to reboot your cable or DSL modem, IP Phone, and router:
- b. Power off your cable or DSL modem by unplugging its power adapter.
- c. Power off the wireless router by unplugging its power adapter.
- d. Power off the IP Phone by pressing and holding down the Power button for two seconds.
- e. Wait 30 seconds, and then power on your cable or DSL modem by plugging its power adapter into an electrical outlet.
- f. Wait 30 seconds. Power on the wireless router by plugging its power adapter into an electrical outlet
- g. Wait 10 seconds. Power on the VW1000 IP Phone by pressing and holding down the Power button (The RED right button) for two seconds.
- h. Reboot one of your networked computers, and check for an active Internet connection.
- i. Set up port forwarding on your router. You must specify that four port ranges be forwarded to the IP address of the IP Phone. These four port ranges are as follows: 5060-5061 (UDP), 53-53 (UDP), 69-69 (UDP), and 10000-20000 (UDP).

11.2 When my VW1000 appear DNS failure, how to fix this problem?

Solve ways can follow up below steps:

- a. to delete the current AP stored in VW1000. Search new AP from beginning. Restart your wireless router as well.
- b. If the above can not solve the problem, then can try to restore the VW1000 to factory default settings.
- c. Change to use SIP server IP address instead of using URL. Check your local internet provider as well.

11.3 How should we use the embedded SIP accounts to call Skype etc.?

(1). First check your account is in such format 899 as the first letters or not. if your phone is supplied with 899 SIP number, then you can use below service we provided.

(2). Use "099" the 3 digit network number for Skype. To make calls to Skype users, please dial 899099xxx where xxx is their Skype Names. For example: Skype name: abc. You can use VW1000 dial this in SIP mode to connect Skype users:

899099abc

(3). Call SIP IP address Network (098). IP address is a great way of dialling a SIP internet phone directly, by-passing any VoIP networks in the middle. The destination phone number is created by putting the IP address aaa.bbb.ccc.ddd behind 899098 to get 899098aaabbbcccddd. Note the IP Addresses are specified WITH leading zeros but WITHOUT dots (.) For example to dial the IP address 123.45.67.89, then you will need to enter 899098123045067089.