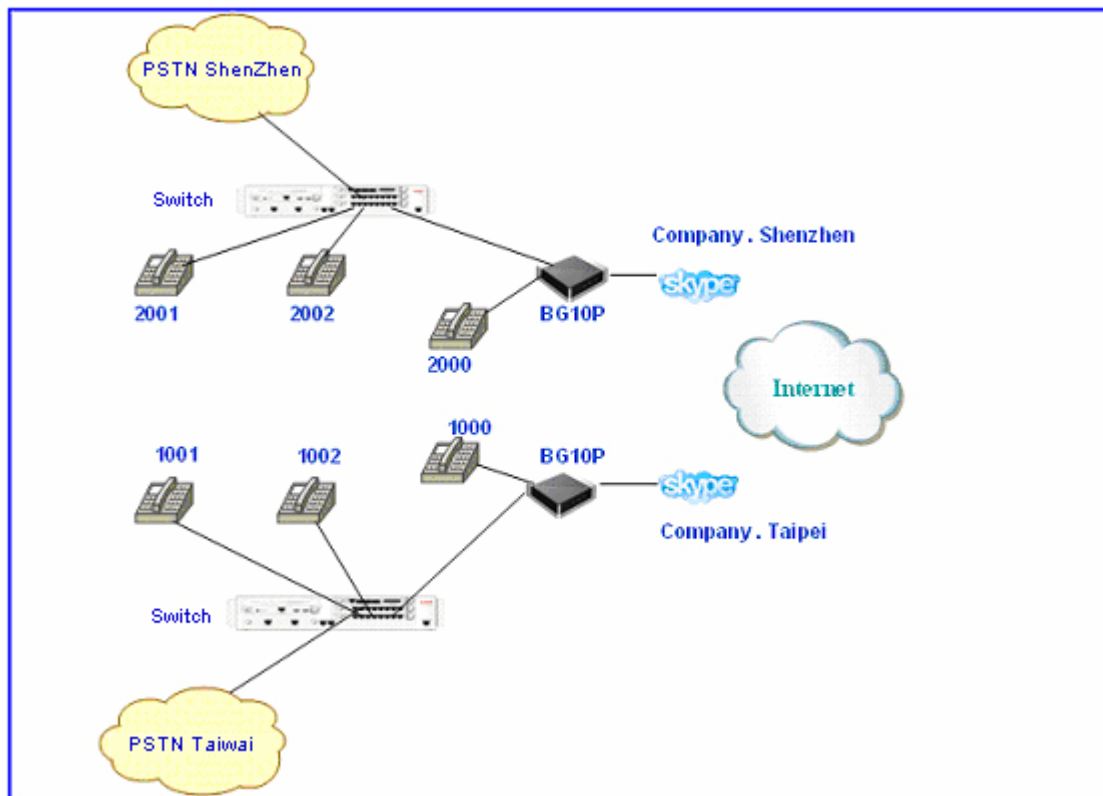


How to establish medium enterprise VoIP network

Is it possible to establish an enterprise VoIP network by only less than 100 dollars? Something like a dream? However this story is definitely true if you use BG10P + Skype.

Application

Mr. Lee is a stationery manufacturer in Taiwan who has factories in both Shenzhen and Taipei. Based on BG10P and ITA software he conveniently established his communication network without any talking free.

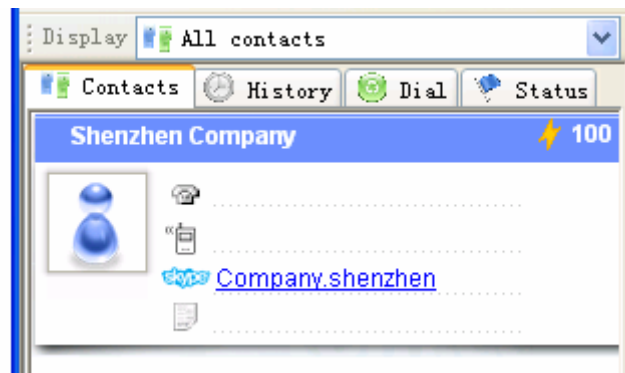
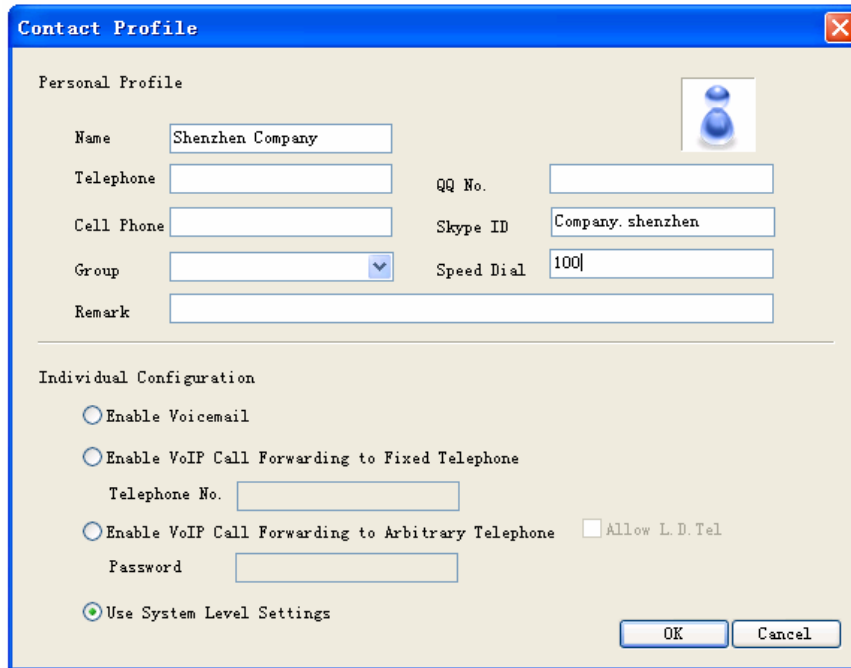


As illustrated, one staff in Taipei office (extension No. 1001) wants to call another staff in Shenzhen office (extension No. 2001). He just picks up the handset and dials 1000 extension. He hears message voice such as “Please enter the extension No.” He inputs 2001 on the phone keyboard and starts the talk with the staff in Shenzhen. Is this an easy way to make international call? Most of all it is totally free.

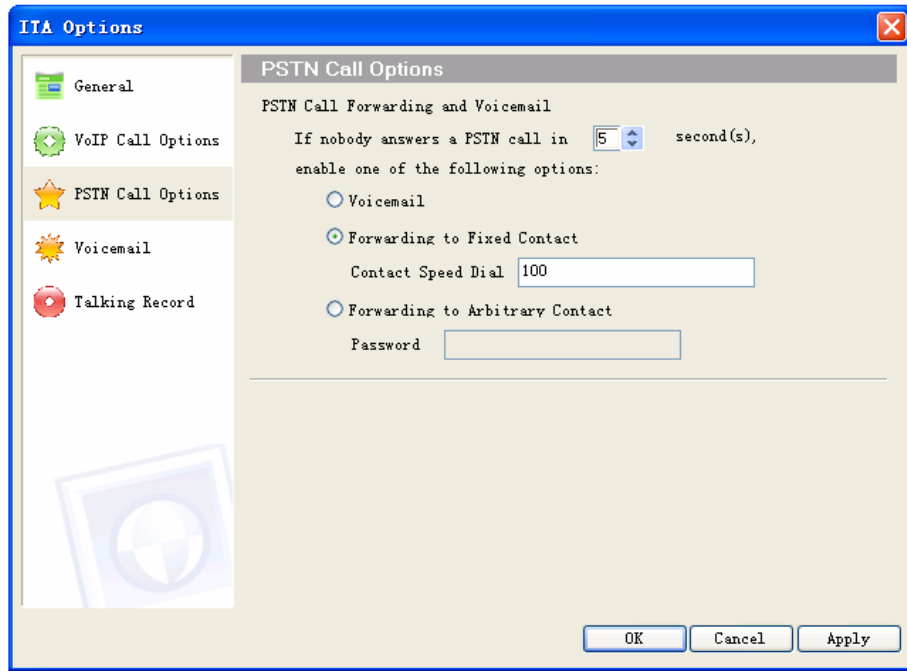
Software Configuration

We should configure the ITA software as following:

1. ITA configuration on Taipei side
 - Add a Skype contact of Shenzhen side, assume its speed-dial is 100



- Enable PSTN forwarding function, and set the contact speed-dial as 100

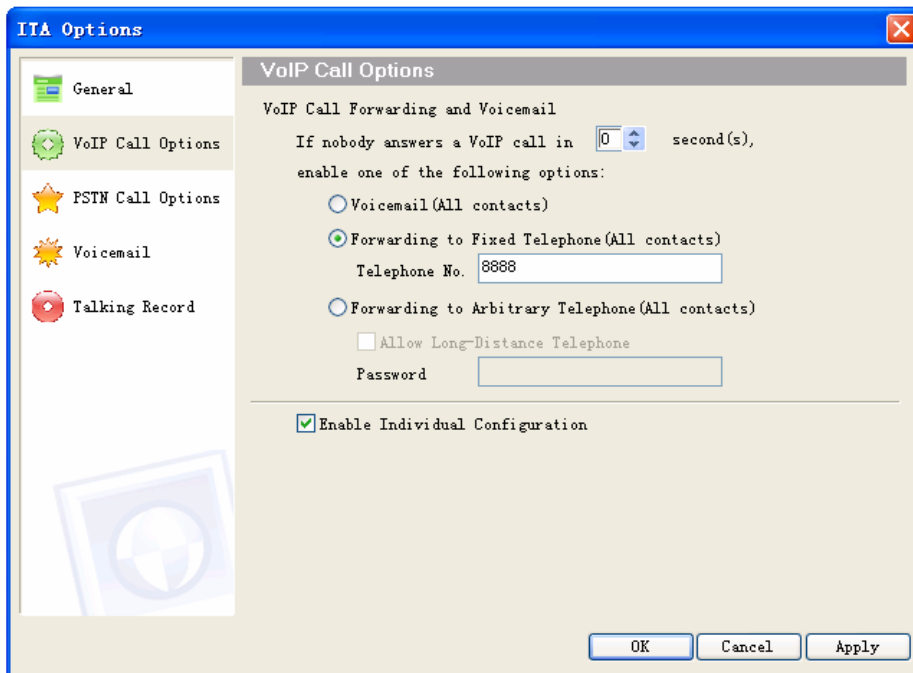


2. ITA software configuration on Shenzhen side

There are two optional methods. You can choose any of the two to fulfill this function

- Method 1 (This method is suitable for PBX with voice guidance)

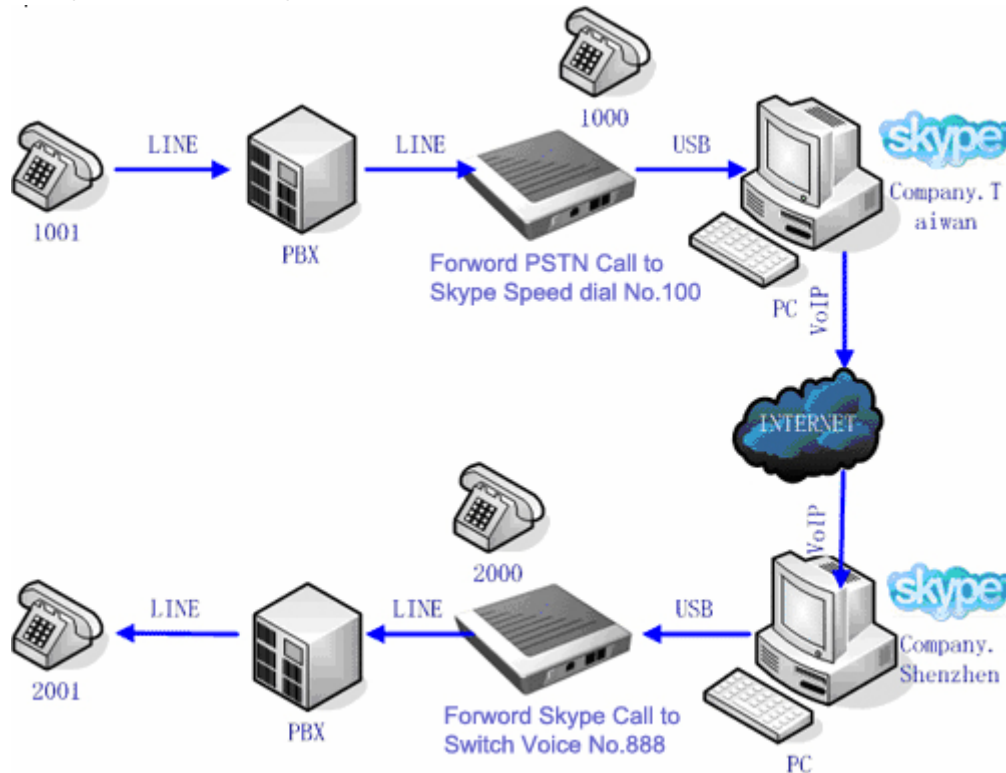
Enable VoIP forwarding to fixed telephone number function (0 second to start). Set the telephone number as PBX voice guidance number. As shown below, 8888 is the voice guidance number of PBX in Shenzhen office. If you call this number directly you will hear “Welcome to call **** company, please dial the extension number, and dial 0 for inquiring.”



So far a staff in Taipei can talk with the staff in Shenzhen without any talking fee.

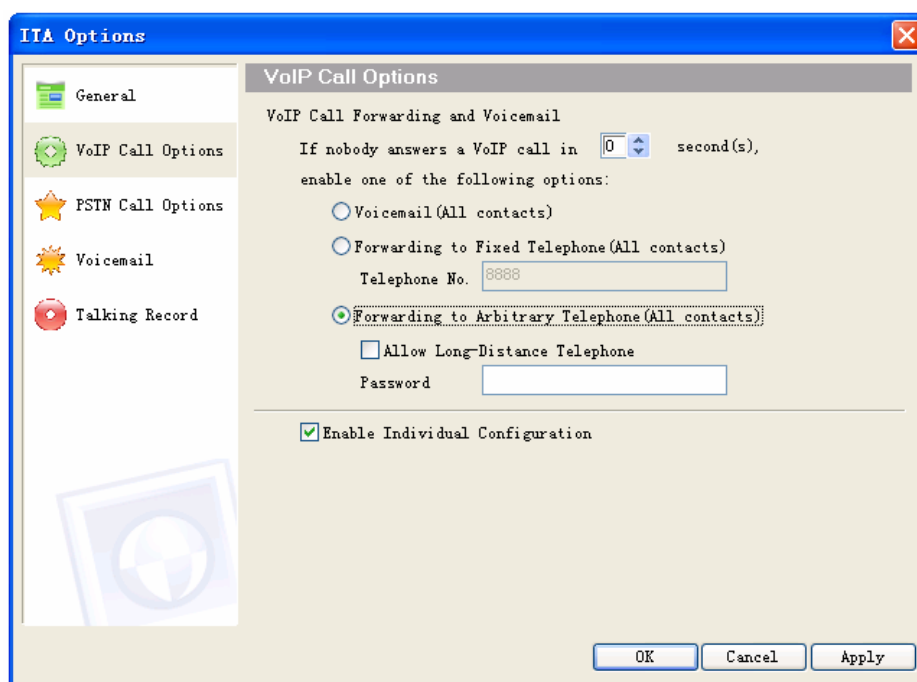
The voice connection of this talk is:

Extension 1001 — » Extension 1000 — » ITA PSTN to Skype forwarding — » Skype(Company.Taipei) — » Internet — » Skype(Company.Shenzhen) — » ITA Skype to PSTN forwarding — » PBX voice guidance number 8888



- Method 2 (This method is suitable for any PBX)

Enable ITA arbitrary forward function (0 second to start and empty password)



As shown above a staff in Taipei can talk with the staff in Shenzhen without any talking cost.

The voice connection of this talk is:

Extension 1001 — » Extension 1000 — » ITA PSTN to Skype forwarding — »
Skype(Company.Taipei) — » Internet — » Skype(Company. Shenzhen) — » ITA Skype to PSTN
forwarding — » Extension 2001

Thanks for Mr.Lee to share his idea with us. By www.voipita.com