





Administratorpassword = voip

Brugerpassword = operator

AG Configuration - Windows Internet Explorer

http://192.168.0.90/

File Edit View Favorites Tools Help

AG Configuration

VOIP

AG VOIP Gateway

- System
- MGCP
- SIP
- Network
- Routing And Dialing Rule
- Line Config
- Advance Config
- Log Info
- System Tools
- Logout

System	
Software Version	Rev 1.9.82.281
Hardware Version	Rev 1.0.2 M8-/4 Kernel 1.8.5.11a (F)
DSP Version	Rev 1.8.188 (0x2551)
RTP Port Min	10010
RTP Port Max	10030
First Digit Timeout(s) *	12
Inter Digit Timeout(s) *	12
Critical Dgt Timeout(s) *	5
DTMF Method *	AUDIO
Default Codec	PCMU/20,PCMA/20
Echo Cancellation	On

Submit Default

Done Internet 100%

start AG Configuratio... VG1041-Vopte... Microsoft Of... C:\Documents a... Microsoft Power... DA 13:15

PCMA/U = G711A/U !!!

Husk rigtigt codec, ellers ingen lyd igennem !

OBS på valg af DTMF / AUDIO / RFC2833

AG Configuration - Windows Internet Explorer

http://192.168.0.90/

File Edit View Favorites Tools Help

AG Configuration

VOIP

AG VOIP Gateway

- System
- MGCP
- SIP
- Network
- Routing And Dialing Rule
- Line Config
 - .Phone Number
 - .Call Status Info
 - .FXO 1
 - .FXO 2
 - .FXO 3
 - .FXO 4
- Advance Config
- Log Info
 - .Resource Info
 - .Message Log
 - .Error Log
 - .Startup Info
 - .Download Log

MGCP

MGCP Port *	2427
Call Agent	
Domain Name	
Default Packages	L,D,G
Persistent Line Event	L/HD,L/HU
Wildcard *	No
All Wildcard *	No
End-Of-Line Using CR *	No
Quarantine Default To Loop *	No
Always Enable 1st Dgt Timeout *	No
Onhook Don't Delete Connection *	No
Notify Instead Of 401/402 *	No
Using Line Package Handle FXO *	No
Using Configured Digit Map *	No

Submit Default

Done

Internet 100%

start AG Configuratio... VG1041--Vopte... 3 Microsoft Of... C:\Documents a... Microsoft Power... DA 13:24

OBS på MGCP-port må ikke konflikte med øvrige portvalg (se også SIP – næste side)

AG Configuration - Windows Internet Explorer

http://192.168.0.90/

File Edit View Favorites Tools Help

AG Configuration

http://192.168.0.99:8089/h...

VOIP

AG VOIP Gateway

- System
- MGCP
- SIP
- Network
- Routing And Dialing Rule
- Line Config
 - .Phone Number
 - .Call Status Info
 - .FXO 1
 - .FXO 2
 - .FXO 3
 - .FXO 4
- Advance Config
- Log Info
 - .Resource Info
 - .Message Log
 - .Error Log
 - .Startup Info
 - .Download Log

SIP	
SIP Port *	5060
Proxy	192.168.0.99
Registrar	192.168.0.99
Register Expires(s)	60
SIP Domain Name	192.168.0.99
Authentication Mode	Per Endpoint
User Name	400
Password	400

Submit Default

Done

start

AG Configuratio... VG1041--Vopte... 3 Microsoft Of... C:\Documents a... Microsoft Power... DA

Internet 100%

13:24

Angiv PBX / SERVER

Vælg endpoint for at hver enkelt linie får en dedikeret SIP-konto (trunk/lokal nummer)

AG Configuration - Windows Internet Explorer

http://192.168.0.90/

AG Configuration

VOIP

AG VOIP Gateway

- System
- MGCP
- SIP
- Network
- Routing And Dialing Rule
- Line Config
 - .Phone Number
 - .Call Status Info
 - .FXO 1
 - .FXO 2
 - .FXO 3
 - .FXO 4
- Advance Config
 - .Resource Info
 - .Message Log
 - .Error Log
 - .Startup Info
 - .Download Log

Network

Host Name	AG-VoIP-GW
Default Gateway	192.168.0.200
Enable DHCP	Off
Ethernet IP Address	192.168.0.90
Subnet Mask	255.255.255.0
MAC Address	00:0E:A9:30:41:15
DNS	
Enable DNS	On
Primary DNS	192.168.0.200
Secondary DNS	192.168.0.200
PPPoE	
Enable PPPoE	Off
PPPoE Username	
PPPoE Password	
SNTP	
Primary SNTP	192.43.244.18
Secondary SNTP	198.60.22.240
Time Zone	Amsterdam

Submit

Trad. Netværksindst. OBS på angivelse af Time-server ntp)

skal angives som IP-adresser

AG Configuration - Windows Internet Explorer

http://192.168.0.90/

AG VOIP Gateway

- System
- MGCP
- SIP
- Network
- Routing And Dialing Rule
 - .Dialing Rule
 - .Routing Table
 - .IP Screening Table
- Line Config
 - .Phone Number
 - .Call Status Info
 - .FXO 1
 - .FXO 2
 - .FXO 3
 - .FXO 4
- Advance Config
- Log Info
 - .Resource Info
 - .Message Log

Dialing Rule

```
9997
100xx
1[3, 5, 8]xxxxxxxx
[2-3, 5-7]xxxxxxxx
8[1-9]xxxxxx
80[1-9]xxxxx
800xxxxxxxx
4[1-9]xxxxxx
40[1-9]xxxxx
400xxxxxxxx
x.T
x.#
#xx
*xx
##
```

Submit

Done

Internet 100%

start AG Configuratio... VG1041--Vopte... 3 Microsoft Of... C:\Documents a... Microsoft Power... DA 13:28

Dial-plan

X = joker, .=vilkaarlig længde o.s.v. se bruger manual.

AG Configuration - Windows Internet Explorer

http://192.168.0.90/

AG Configuration

VOIP

AG VOIP Gateway

- System
- MGCP
- SIP
- Network
- Routing And Dialing Rule
 - .Dialing Rule
 - .Routing Table
 - .IP Screening Table
- Line Config
 - .Phone Number
 - .Call Status Info
 - .FXO 1
 - .FXO 2
 - .FXO 3
 - .FXO 4
- Advance Config
- Log Info
 - .Resource Info
 - .Message Log

Routing Table

IP	X.	ROUTE	FXO	1,2,3,4

Submit

Done

Internet 100%

start AG Configurati... VG1041--Vopte... 3 Microsoft O... C:\Documents ... Microsoft Powe... DA 13:29

Routing table – eventhandler for indgående IP:

IP X. ROUTE FXO 1,2,3,4 = alle kald routes til FXO1 uanset nummer x.=”alle numre”, dernæst til FXO2 eller 3 eller 4 hvis optaget.

AG Configuration - Windows Internet Explorer

http://192.168.0.90/

File Edit View Favorites Tools Help

AG Configuration

VOIP

AG VOIP Gateway

- System
- MGCP
- SIP
- Network
- Routing And Dialing Rule
 - .Dialing Rule
 - .Routing Table
 - .IP Screening Table
- Line Config
 - .Phone Number
 - .Call Status Info
 - .FXO 1
 - .FXO 2
 - .FXO 3
 - .FXO 4
- Advance Config
- Log Info
 - .Resource Info
 - .Message Log

IP Screening Table

Submit

Done

Internet 100%

start AG Configuratio... VG1041--Vopte... 3 Microsoft Of... C:\Documents a... Microsoft Power... DA 13:33

IP Table definere hvilke klienter der må benytte gatewayen (hvis blank = alle)

AG Configuration - Windows Internet Explorer

http://192.168.0.90/

File Edit View Favorites Tools Help

AG Configuration

VOIP

AG VOIP Gateway

- System
- MGCP
- SIP
- Network
- Routing And Dialing Rule
 - .Dialing Rule
 - .Routing Table
 - .IP Screening Table
- Line Config
 - .Phone Number
 - .Call Status Info
 - .FXO 1
 - .FXO 2
 - .FXO 3
 - .FXO 4
- Advance Config
- Log Info
 - .Resource Info
 - .Message Log

Phone Number	
Hardware	FXO4
Prefix	400
FXO 1	401
FXO 2	402
FXO 3	403
FXO 4	404

Submit Default

Done

Internet 100%

start AG Configuratio... VG1041--Vopte... 3 Microsoft Of... C:\Documents a... Microsoft Power... DA 13:34

Hardware præfiks og linie-præfiks

AG Configuration - Windows Internet Explorer

http://192.168.0.90/

AG VOIP Gateway

- System
- MGCP
- SIP
- Network
- Routing And Dialing Rule
 - .Dialing Rule
 - .Routing Table
 - .IP Screening Table
- Line Config
 - .Phone Number
 - Call Status Info**
 - .FXO 1
 - .FXO 2
 - .FXO 3
 - .FXO 4
- Advance Config
- Log Info
 - .Resource Info
 - .Message Log

status	ts	d	c	call	remote	local	codec	state	number	timestamp	callid
FXO-1	offhook	0	0	0	6002	192.168.0.99:10010	10012	PCMA/20	ACTIIVE	(D)9997	13:36:29 3
12556065881147098207-0@192.168.0.90 PS:163, PR=167, PL=0, NV=0/0											
FXO-2	onhook	N/A									
FXO-3	onhook	N/A									
FXO-4	onhook	N/A									

http://192.168.0.90/lineinfo.htm

Internet 100%

13:36

Call Status Info

Se alle "aktioner" mens der foretages/modtages opkald på FXO-portene

AG Configuration - Windows Internet Explorer

http://192.168.0.90/

AG Configuration

VOIP

AG VOIP Gateway

- System
- MGCP
- SIP
- Network
- Routing And Dialing Rule
 - .Dialing Rule
 - .Routing Table
 - .IP Screening Table
- Line Config
 - .Phone Number
 - .Call Status Info
 - .FXO 1
 - .FXO 2
 - .FXO 3
 - .FXO 4
- Advance Config
- Log Info
 - .Resource Info
 - .Message Log

FXO Settings

Line Number	FXO-1
Phone Number	401
Registration	On
Display Name	401
Password	401
Originating Restriction	Off
Direct Inward Calling	On
2nd Stage Dial	On
Echo Cancellation	On
Detect Caller ID	On
Reverse Battery	Off
Direct Inward Calling Number	9997
Incoming Voice Prompt	Off
Outgoing Delay 200OK	On

Submit

Indstillinger for FXO-linie1

Her viderestilles alle indgående opkald til 9997 (= omstilling på PBX)

VOIP

- System
- MGCP
- SIP
- Network
 - .Dialing Rule
 - .Routing Table
 - .IP Screening Table
- Line Config
 - .Phone Number
 - .Call Status Info
 - .FXO 1
 - .FXO 2
 - .FXO 3
 - .FXO 4
- Advance Config
 - .System

System	
Syslog Server	<input type="text"/>
Debug Log Server	<input type="text"/>
Event Log Level *	4 <input type="button" value="v"/>
Country ID	China <input type="button" value="v"/>
Forwarding Number Mode *	Forwarding Number <input type="button" value="v"/>
Listen IP	Yes <input type="button" value="v"/>
Routing Manners *	Sequential <input type="button" value="v"/>
NAT	
IP Address	<input type="text"/>
Refresh Timer(s) *	15
Enable Keep Alive *	Yes <input type="button" value="v"/>
STUN	
Enable/disable STUN *	0
STUN Server	<input type="text"/>

Advanced Config, System

VOIP

- System
- MGCP
- SIP
- Network
- Routing And Dialing Rule

.Dialing Rule
.Routing Table
.IP Screening Table

- Line Config

.Phone Number
.Call Status Info
.FXO 1
.FXO 2

.Phone Number
.Call Status Info
.FXO 1
.FXO 2
.FXO 3
.FXO 4

- Advance Config

.System
.IP
.SIP
.FXO

IP

RTP Jitter Param 1	50
RTP Jitter Param 2	3
2833 Payload Type	100
ILBC Codec Payload Type	97
RTP Drop SID	No
RTP Proxy	Off
RTP Accelerate	Yes
SDP Global Connection	Yes
SDP Using NAT	No
IP Failure Play Busy	Off
IP Failure Goto FXO	On
Enable VAD	Yes
G.723.1 Rate	6300
DSP Driver	1
IP TOS	0x0C
T.38	
Enable T.38	On
Packet Time(ms)	30
Redundancy	4
Change RTP Port	No
ECM Mode	Off
V.21 Detection	On
Jitter Size	250
Receive Gain	1
Send Gain	2

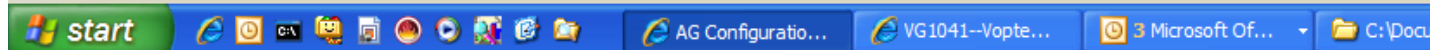
Submit

Default

Advanced Config IP

Div. SIP-timer
settings m.v.
(svarer til SIP-
settings i Linksys)

Done



VOIP

- System
- MGCP
- SIP
- Network
- Routing And Dialing Rule
 - .Dialing Rule
 - .Routing Table
 - .IP Screening Table
- Line Config
 - .Phone Number
 - .Call Status Info
 - .FXO 1
 - .FXO 2
 - .FXO 3
 - .FXO 4
- Advance Config
 - .System
 - .IP
 - .SIP
 - .FXO

SIP	
Response Using Received Port	No <input type="button" value="v"/>
Response Using Proxy Port	Yes <input type="button" value="v"/>
Using Local Port	Yes <input type="button" value="v"/>
Always Send 180	No <input type="button" value="v"/>
CDPN From Request Line	Yes <input type="button" value="v"/>
Do Not Validate Via	Yes <input type="button" value="v"/>
Register Keep Domain	Yes <input type="button" value="v"/>
Register Keep Contact	No <input type="button" value="v"/>
SIP Via Using NAT	No <input type="button" value="v"/>
SIP To Using Domain Name	Yes <input type="button" value="v"/>
SIP CallId Using Hostname	No <input type="button" value="v"/>
SIP PRACK	No <input type="button" value="v"/>
Auto SIP Port Selection	0 <input type="text"/>
Reregister After INVITE Timeout	No <input type="button" value="v"/>
Sip Session Support	Yes <input type="button" value="v"/>
Sip Session Timer	1800 <input type="text"/>
Min Session Timer	1800 <input type="text"/>

Advanced Config, SIP

Div. SIP-settings m.v. (svarer til SIP-settings i Linksys)

VOIP

- System
- MGCP
- SIP
- Network
- Routing And Dialing Rule
 - .Dialing Rule
 - .Routing Table
 - .IP Screening Table
- Line Config
 - .Phone Number
 - .Call Status Info
 - .FXO 1
 - .FXO 2
 - .FXO 3
 - .FXO 4
- Advance Config
 - .System
 - .IP
 - .SIP
 - .FXO

FXO

Gain To PSTN	-3.0
Gain To IP	0
Impedance	Complex
Relay Delay Time(ms)	400
Voice Prompt On Busy	Off
Ring Relay	0
DTMF Digit On Time(ms)	100
DTMF Digit Off Time(ms)	100
Busy Tone Detection	
Repeat	2
On Time(ms)	350
Off Time(ms)	350
Other	
Caller ID Before Ring	No
First Digit Timeout(s)	24
Answer Delay(s)	12
Fake Answer Timeout(ms)	600
On Hook Hold Time(ms)	400
Cut-through Delay(ms)	0
Ring Detect After Filter	Yes
Polarity Reversal Detect	No
Line Connection Detect	No
Parallel Line Status Detect	No

Submit

Default

Avancerede FXO-indstillinger (generelt for alle 4 linier)

AG Configuration - Windows Internet Explorer

http://192.168.0.90/

File Edit View Favorites Tools Help

TREND Safe page

AG Configuration

VOIP

AG VOIP Gateway

- .Dialing Rule
- .Routing Table
- .IP Screening Table
- Line Config
 - .Phone Number
 - .Call Status Info
 - .FXO 1
 - .FXO 2
 - .FXO 3
 - .FXO 4
- Advance Config
 - .System
 - .IP
 - .SIP
 - .FXO
 - .FXS
 - .EMS
 - .DSP
 - .Billing
 - .TONE
 - .Feature Code
 - .Backup Proxy
 - .Auto Provision
- Log Info

EMS

Primary EMS	<input type="text"/>
Secondary EMS	<input type="text"/>
EMS Log Level	4
EMS Retries	3
Register Interval(s)	15
Report Interval(s)	900

Submit

Done

Internet 100%

start AG Configuratio... VG1041--Vopte... 3 Microsoft Of... C:\Documents a... Microsoft Power... DA 13:47

EMS = Event Manage Server (svarende til CDR / Call Detailed Record) – evt. blank

VOIP

.Dialing Rule
.Routing Table
.IP Screening Table

- Line Config

.Phone Number
.Call Status Info
.FXO 1
.FXO 2
.FXO 3
.FXO 4

- Advance Config

.System
.IP
.SIP
.FXO
.FXS
.EMS
.DSP
.Billing
.TONE
.Feature Code
.Backup Proxy
.Auto Provision

- Log Info

DSP

DTMF Detection Settings

DTMF Energy(%)	10
DTMF Twist(%)	25
DTMF Duration Min (ms)	48
Cancel Echo Before DTMF Det	Yes

Echo Suppression Settings

Echo Suppression	Yes
Echo Converge	5
Echo Tail Threshold	150

Submit

Indstillinger af DSP (Digital Signalling Processor)

Finindstillinger af DTMF m.v.

- .Dialing Rule
- .Routing Table
- .IP Screening Table

- Line Config

- .Phone Number
- .Call Status Info
- .FXO 1
- .FXO 2
- .FXO 3
- .FXO 4

- Advance Config

- .System
- .IP
- .SIP
- .FXO
- .FXS
- .EMS
- .DSP
- .Billing
- .TONE
- .Feature Code
- .Backup Proxy
- .Auto Provision

- Log Info

Billing

Billing Server	<input type="text"/>
Enable Call Upon Bill Failure *	Yes <input type="button" value="v"/>
RADIUS	
Client Accounting *	Off <input type="button" value="v"/>
Server Accounting *	Off <input type="button" value="v"/>
Start Message *	Off <input type="button" value="v"/>
Unsuccessful Stop *	Off <input type="button" value="v"/>
Primary Server	<input type="text"/>
Key	<input type="text"/>
Secondary Server	<input type="text"/>
Key	<input type="text"/>
Timeout(s) *	3 <input type="button" value="v"/>
Retries *	3 <input type="button" value="v"/>

Submit

Default

Mulighed for at tilføje en Billing-Server

VOIP

.Dialing Rule
.Routing Table
.IP Screening Table

- Line Config

.Phone Number
.Call Status Info
.FXO 1
.FXO 2
.FXO 3
.FXO 4

- Advance Config

.System
.IP
.SIP
.FXO
.FXS
.EMS
.DSP
.Billing
.TONE
.Feature Code
.Backup Proxy
.Auto Provision

- Log Info

TONE	
Dial Tone	<input type="text"/>
Ringback Tone	<input type="text"/>
Call Waiting Tone	<input type="text"/>
Busy Tone	<input type="text"/>
Second Dial Tone	<input type="text"/>
Stutter Dial Tone	<input type="text"/>
Congestion Tone	<input type="text"/>
Disconnect Tone	<input type="text"/>
Confirmation Tone	<input type="text"/>

Indstilling af tone og ringefrekvenser (blank = OK)

.Dialing Rule
.Routing Table
.IP Screening Table

- Line Config
 - .Phone Number
 - .Call Status Info
 - .FXO 1
 - .FXO 2
 - .FXO 3
 - .FXO 4
- Advance Config
 - .System
 - .IP
 - .SIP
 - .FXO
 - .FXS
 - .EMS
 - .DSP
 - .Billing
 - .TONE
 - .Feature Code
 - .Backup Proxy
 - .Auto Provision
- Log Info

Feature Code	
Enable All Fwd	*60
Disable All Fwd	#60
Enable Busy Fwd	*61
Disable Busy Fwd	#61
Enable No Answer Fwd	*62
Disable No Answer Fwd	#62
Cancel Call Waiting	*64
Enable Do Not Disturb	*72
Disable Do Not Disturb	#72
Set Speed Dial	*74
Speed Dial Prefix	**
Call Parking	*98
Blind Transfer	*38
Enable Fork	*75
Disable Fork	#75
Listen IP Address	##
Listen Phone Number	#00
Listen PPPoE IP	#01
Set Fashion Ring	*80
Cancel Fashion Ring	#80
Listen Fashion Ring	*88

Submit Default

Feature Codes = mulighed for at ændre indstillinger af gateway via telefonens tastatur

VOIP

.Dialing Rule
.Routing Table
.IP Screening Table

• Line Config

.Phone Number
.Call Status Info
.FXO 1
.FXO 2
.FXO 3
.FXO 4

• Advance Config

.System
.IP
.SIP
.FXO
.FXS
.EMS
.DSP
.Billing
.TONE
.Feature Code
.Backup Proxy
.Auto Provision

Backup Proxy

Proxy 1

Proxy 2

Proxy 3

Proxy 4

Proxy 5

Proxy 6

Proxy 7

Proxy 8

Proxy 9

Proxy 10

Submit

Fall-Back Proxy (andvend VoIP hvis der ikk eer liniesgnal på PSTN / flere ledige linier.

VOIP

.Dialing Rule
.Routing Table
.IP Screening Table

- Line Config

.Phone Number
.Call Status Info
.FXO 1
.FXO 2
.FXO 3
.FXO 4

- Advance Config

.System
.IP
.SIP
.FXO
.FXS
.EMS
.DSP
.Billing
.TONE
.Feature Code
.Backup Proxy
.Auto Provision

- Log Info

Auto Provision

Auto Provision

No

Config URL

Submit

Mulighed for anvendelse af Auto-provisionering server

VOIP

- Line Config

- .Phone Number
- .Call Status Info
- .FXO 1
- .FXO 2
- .FXO 3
- .FXO 4

- Advance Config

- .System
- .IP
- .SIP
- .FXO
- .FXS
- .EMS
- .DSP
- .Billing
- .TONE
- .Feature Code
- .Backup Proxy
- .Auto Provision

- Log Info

- .Resource Info
- .Message Log

Resource Info

Login User Info >>>>

1) 192.168.0.202 1

SIP Registration Info >>>>

Contact: <sip:401@192.168.0.90:5060>
response: 200

Contact: <sip:402@192.168.0.90:5060>
response: 200

Contact: <sip:403@192.168.0.90:5060>
response: 200

Contact: <sip:404@192.168.0.90:5060>
response: 200

Latest Call Info >>>>

---- empty ----

Call Context Info >>>>

---- empty ----

Rtp Context Info >>>>

---- empty ----

LOG Info

Ressources

Viser on-line SIP

Og Admin IP-
adresse m.v.

• Line Config

- .Phone Number
- .Call Status Info
- .FXO 1
- .FXO 2
- .FXO 3
- .FXO 4

• Advance Config

- .System
- .IP
- .SIP
- .FXO
- .FXS
- .EMS
- .DSP
- .Billing
- .TONE
- .Feature Code
- .Backup Proxy
- .Auto Provision

• Log Info

- .Resource Info
- .Message Log
- .Error Log
- .Startup Info

Log Info

```
E,OPTIONS,INFO,REFER,PRACK,UPDATE
Supported: timer
User-Agent: AG-v1.9.82.281/UA 2.0
Session-Expires: 1800
Content-Type: application/sdp
Content-Length: 166

v=0
o=- 1255606588 794329 IN IP4 192.168.0.90
s=-
c=IN IP4 192.168.0.90
t=0 0
m=audio 10012 RTP/AVP 0 8
a=ptime:20
a=rtpmap:0 PCMU/8000
a=rtpmap:8 PCMA/8000

[10/15 13:36:28.881770]SIP: rcv from IP[192.168.0.99:5060],len=[493],msg=
SIP/2.0 407 Proxy Authentication Required
Via: SIP/2.0/UDP 192.168.0.90:5060;branch=z9hG4bK-106273168612556065881255605546
From: 401 <sip:401@192.168.0.99>;tag=12556065881255605545-1
To: <sip:9997@192.168.0.99>;tag=as0929df40
Call-ID: 12556065881147098207-0@192.168.0.90
CSeq: 100040 INVITE
User-Agent: IP-PBX
Allow: INVITE, ACK, CANCEL, OPTIONS, BYE, REFER, SUBSCRIBE
Contact: <sip:9997@192.168.0.99>
```

LOG info – Message Log – (debug af samtaler, SIP-invite o.s.v.)

.FXO 3

.FXO 4

- Advance Config

.System

.IP

.SIP

.FXO

.FXS

.EMS

.DSP

.Billing

.TONE

.Feature Code

.Backup Proxy

.Auto Provision

- Log Info

.Resource Info

.Message Log

.Error Log

.Startup Info

.Download Log

- System Tools

- Logout

Log Info

```
[10/15 13:18:56.615895] system_net_param_read() - unknown network param: USE_FRING=off
[10/15 13:18:56.622817] system_net_param_read() - unknown network param: TIMEZONE_DST=0
[10/15 13:18:56.944464] initLineMmap() - Open dev/lineudev success, 10 !
[10/15 13:18:56.991936] initDspMmap() - Open dev/dspdev success, 11 !
[10/15 13:19:00.517513] slow_hw_scan(707) - ether link up, speed=1, duplex=10
[10/15 13:19:22.065809] apptthread.cxx(527) - web get error: rc=-10
[10/15 13:19:25.959493] login() - admin, 0) IP=192.168.0.202 (1)
```

LOG info – Error Log – (debug / se fejlmeddelelser o.s.v.)

.FXO 3

.FXO 4

• Advance Config

.System

.IP

.SIP

.FXO

.FXS

.EMS

.DSP

.Billing

.TONE

.Feature Code

.Backup Proxy

.Auto Provision

• Log Info

.Resource Info

.Message Log

.Error Log

.Startup Info

.Download Log

• System Tools

• Logout

Log Info

```
[10/15 13:18:56.455592] config.c(3484) - INFO: parameter FT_ANS_DLY_1 set with on, (450/0)
[10/15 13:18:56.458195] config.c(3484) - INFO: parameter FT_FSK_1 set with on, (454/0)
[10/15 13:18:56.564880] get_kernel_info() - 1.8.5.11a
[10/15 13:18:56.565841] calculate_fxo_gain() - FXO DSP gain=0, tx/rx=0/-3
[10/15 13:18:56.566444] calculate_fxs_gain() - FXS DSP gain=0, tx/rx=0/-3
[10/15 13:18:56.604555] app_start() - IP TOS = 0xc

[10/15 13:18:56.606485] app_start() - === voice gateway application start ===
[10/15 13:18:56.607040] app_start() - SW revision: Rev 1.9.82.281
[10/15 13:18:56.610885] getmac() - eth0 HW Addr: 00:0e:a9:30:41:15
[10/15 13:18:56.612997] system_net_param_read() - network hostname: AG-VoIP-GW
[10/15 13:18:56.613948] system_net_param_read() - gateway: 192.168.0.200
[10/15 13:18:56.614782] system_net_param_read() - gateway device: eth0
[10/15 13:18:56.619928] system_net_param_read() - PPPoE: off
[10/15 13:18:56.620810] system_net_param_read() - PPPoE PEER DNS: off
[10/15 13:18:56.621633] system_net_param_read() - gateway device: eth0
[10/15 13:18:56.624086] system_net_param_read() - no gateway device config
[10/15 13:18:56.675392] system_net_param_read2() - Auto Provision: No
[10/15 13:18:56.676953] system_eth_param_read() - eth device: eth0
[10/15 13:18:56.678225] system_eth_param_read() - eth boot protocol: none
[10/15 13:18:56.679612] system_eth_param_read() - eth ipaddr: 192.168.0.90
[10/15 13:18:56.680561] system_eth_param_read() - eth netmask: 255.255.255.0
[10/15 13:18:56.869433] app_start() - gateway info: 192.168.0.200
[10/15 13:18:56.946008] initLineMmap() - APP MMAP Success ! LINE event queue address:
0x30026000
[10/15 13:18:56.946617] app_start() - HW revision: Rev 1.0.2 M8-I4
```

LOG info – Start Up Log – (debug / se fejlmeddelelser o.s.v.)

VOIP

.FXO 3
.FXO 4

- Advance Config

.System
.IP
.SIP
.FXO
.FXS
.EMS
.DSP
.Billing
.TONE
.Feature Code
.Backup Proxy
.Auto Provision

- Log Info

.Resource Info
.Message Log
.Error Log
.Startup Info
.Download Log

- System Tools

- Logout

Download Log

Click 'Download' button to download files. Depending on the size of files, the downloading may take few minutes. Note: System does not support multi-user login and download

Download

LOG info – Download Log– (debug gem logfil på harddisk)

- .SIP
- .FXO
- .FXS
- .EMS
- .DSP
- .Billing
- .TONE
- .Feature Code
- .Backup Proxy
- .Auto Provision

- Log Info

- .Resource Info
- .Message Log
- .Error Log
- .Startup Info
- .Download Log

- System Tools

- .Factory Config
- .Software Upgrade
- .Config Upgrade
- .Download Config
- .Change Password
- .Reboot

- Logout

Factory Config

NOTE: Click 'Submit' button will return the configurations to its factory settings (including the network configurations)

**Factory Reset
PAS PÅ
0-stiller gateway'en til
fabriksindstillinger**

VOIP

- .SIP
- .FXO
- .FXS
- .EMS
- .DSP
- .Billing
- .TONE
- .Feature Code
- .Backup Proxy
- .Auto Provision

- Log Info

- .Resource Info
- .Message Log
- .Error Log
- .Startup Info
- .Download Log

- System Tools

- .Factory Config
- .Software Upgrade
- .Config Upgrade
- .Download Config
- .Change Password
- .Reboot

- Logout

Software Upgrade/Config Upgrade

Make sure that the size of upgrade package does not exceed 4MB

Software Upgrade – (installation af ny firmware / opdateringer)

VOIP

- .SIP
- .FXO
- .FXS
- .EMS
- .DSP
- .Billing
- .TONE
- .Feature Code
- .Backup Proxy
- .Auto Provision

- Log Info

- .Resource Info
- .Message Log
- .Error Log
- .Startup Info
- .Download Log

- System Tools

- .Factory Config
- .Software Upgrade
- .Config Upgrade
- .Download Config
- .Change Password
- .Reboot

- Logout

Software Upgrade/Config Upgrade

Make sure that the size of upgrade package does not exceed 4MB

Browse...

Upload

Config Upgrade – (installation af tidligere gemt opsætning / configurationsfil)

VOIP

- .SIP
- .FXO
- .FXS
- .EMS
- .DSP
- .Billing
- .TONE
- .Feature Code
- .Backup Proxy
- .Auto Provision

- Log Info

- .Resource Info
- .Message Log
- .Error Log
- .Startup Info
- .Download Log

- System Tools

- .Factory Config
- .Software Upgrade
- .Config Upgrade
- .Download Config
- .Change Password
- .Reboot

- Logout

Download Config

Click 'Download' button to download files. Depending on the size of files, the downloading may take few minutes. Note: System does not support multi-user login and download

Download

Download Config– (gem opsætning til fil / configurationsfil)

VOIP

- .SIP
- .FXO
- .FXS
- .EMS
- .DSP
- .Billing
- .TONE
- .Feature Code
- .Backup Proxy
- .Auto Provision

- Log Info

- .Resource Info
- .Message Log
- .Error Log
- .Startup Info
- .Download Log

- System Tools

- .Factory Config
- .Software Upgrade
- .Config Upgrade
- .Download Config
- .Change Password
- .Reboot

- Logout

Change Password

Old Password

New Password

Confirm New Password

Operator Password

operator

Submit

Change Password– (husk at skrive dit password ned / gemme det et sikkert sted !!!)

- .SIP
- .FXO
- .FXS
- .EMS
- .DSP
- .Billing
- .TONE
- .Feature Code
- .Backup Proxy
- .Auto Provision

- Log Info

- .Resource Info
- .Message Log
- .Error Log
- .Startup Info
- .Download Log

- System Tools

- .Factory Config
- .Software Upgrade
- .Config Upgrade
- .Download Config
- .Change Password
- .Reboot

- Logout

Reboot

Click 'Warm Restart' to make configuration changes taking effect. Click 'Cold Reboot' to restart the whole system

Reboot gateway – (Warm er nok ved div. småændringer). Cold hvis den låser

.SIP
.FXO
.FXS
.EMS
.DSP
.Billing
.TONE
.Feature Code
.Backup Proxy
.Auto Provision

- Log Info

.Resource Info
.Message Log
.Error Log
.Startup Info
.Download Log

- System Tools

.Factory Config
.Software Upgrade
.Config Upgrade
.Download Config
.Change Password
.Reboot

- Logout

VoIP GateWay Management System

Logout. Enter password to login again

Password

Submit

Logout -

angiv password for at logge på igen 😊